



LE910Cx - mPCIe

HW Design Guide

1VV0301510 Rev. 15 – 2021-11-03

APPLICABILITY TABLE

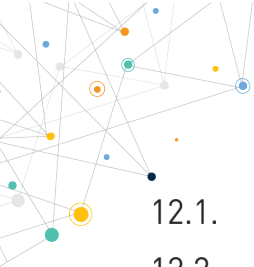
PRODUCTS
LE910C1-NS
LE910C1-NA
LE910C1-NF
LE910C4-NF
LE910C1-AP
LE910C4-AP
LE910C1-EU
LE910C4-EU
LE910C1-EUX
LE910C1-SVX
LE910C1-SAX
LE910C1-SA
LE910C1-ST
LE910C1-SV
LE910C1-LA
LE910C4-LA
LE910C4-CN
LE910C1-WWX
LE910C4-WWX
LE910C1-WWXD
LE910C4-WWXD

CONTENTS

APPLICABILITY TABLE	2
CONTENTS	3
1. INTRODUCTION	7
1.1. Scope	7
1.2. Audience	7
1.3. Contact Information, Support	7
1.4. Symbol Conventions	8
1.5. Related Documents	8
2. GENERAL PRODUCT DESCRIPTION	9
2.1. Overview	9
2.2. Product Variants and Frequency Bands	9
2.3. Target Market	10
2.4. Main Features	10
2.5. TX Output Power	11
2.6. RX Sensitivity	12
2.7. Mechanical Specifications	13
2.7.1. Dimensions	13
2.7.2. Weight	13
2.8. Temperature Range	14
3. PINS ALLOCATION	15
3.1. Pin-out	15
3.2. Pin-out for the Full Compatibility with PCI Express MiniCard Specification.	17
4. POWER SUPPLY	21
4.1. Power Supply Requirements	21
4.2. Power Consumption	21
4.3. General Design Rules	21
4.3.1. Electrical Design Guidelines	22

4.3.1.1.	+5V Source Power Supply Design Guidelines	22
4.3.1.2.	+12V Source Power Supply Design Guidelines	23
4.3.2.	Thermal Design Guidelines	24
4.3.3.	Power Supply PCB Layout Guidelines	25
4.4.	VAUX Power Output	27
4.5.	GNSS LNA BIAS	27
5.	ELECTRICAL SPECIFICATION	29
5.1.	Absolute Maximum Ratings – Not Operational	29
5.2.	Recommended Operating Conditions	29
6.	DIGITAL SECTION	30
6.1.	Logic Levels	30
6.2.	Power On	31
6.3.	Unconditional Restart	33
6.4.	Power OFF Procedure	36
6.5.	Control Signals	37
6.5.1.	WAKE_N	38
6.5.2.	W_DISABLE_N	39
6.5.3.	LED_WWAN_N	39
6.5.4.	PERST_N	40
6.6.	Hardware Interfaces	41
6.6.1.	USB Port	41
6.6.2.	Serial Port	42
6.6.2.1.	Modem Serial Port 1 Signals	43
6.6.2.2.	RS232 Level Translation	43
6.6.3.	I2C – Inter-integrated Circuit	45
6.6.4.	Digital Audio	45
6.7.	SIM Interface	46
7.	RF SECTION	48
7.1.	Band Variants	48

7.2.	TX and RX Characteristics	48
7.3.	Antenna Requirements	48
7.3.1.	Antenna Connectors	48
7.3.2.	Main GSM/WCDMA/LTE Antenna Requirements	49
7.3.3.	Antenna Diversity Requirements	49
7.3.4.	GNSS Antenna Requirements	50
7.3.4.1.	Combined GNSS Antenna	51
7.3.4.2.	Linear and Patch GNSS Antenna	51
8.	MECHANICAL DESIGN	52
8.1.	Mechanical Dimensions	52
8.1.1.	Mechanical Drawing (with SIM Holder)	52
8.1.1.1.	Top View	52
8.1.1.2.	Bottom View	54
8.1.1.3.	Side View	55
8.1.2.	Mechanical Drawing (without SIM Holder)	56
8.1.2.1.	Top View	56
8.1.2.2.	Bottom View	57
8.1.2.3.	Side View	58
9.	APPLICATION PCB DESIGN	59
9.1.	Recommended Footprint for the Application	59
10.	EMC RECOMMENDATIONS	60
11.	PACKAGING	61
11.1.	Tray	61
11.2.	Tray Packing	61
11.3.	Packing Quantities	61
11.4.	Tray Drawing	63
11.5.	Moisture Sensitivity	64
12.	CONFORMITY ASSESSMENT ISSUES	65



12.1.	RED Declaration of Conformity	65
12.2.	UKCA Declaration of Conformity	65
12.3.	RED/UKCA Antennas	65
13.	REFERENCE TABLE OF RF BANDS CHARACTERISTICS	66
14.	PRODUCT AND SAFETY INFORMATION	68
14.1.	Copyrights and Other Notices	68
14.1.1.	Copyrights	68
14.1.2.	Computer Software Copyrights	68
14.2.	Usage and Disclosure Restrictions	69
14.2.1.	License Agreements	69
14.2.2.	Copyrighted Materials	69
14.2.3.	High Risk Materials	69
14.2.4.	Trademarks	70
14.2.5.	3rd Party Rights	70
14.2.6.	Waiver of Liability	70
14.3.	Safety Recommendations	71
15.	GLOSSARY	72
16.	DOCUMENT HISTORY	73

1. INTRODUCTION

1.1. Scope

This document describes some hardware solutions useful for developing a product with the Telit xE910Cx Mini PCIe Adapter.

1.2. Audience

This document is intended for Telit customers, especially system integrators, about to implement their applications using the Telit xE910Cx Mini PCIe Adapter.

1.3. Contact Information, Support

For general contact, technical support services, technical questions and report documentation errors contact Telit Technical Support at:

- TS-EMEA@telit.com
- TS-AMERICAS@telit.com
- TS-APAC@telit.com
- TS-SRD@telit.com

Alternatively, use:

<https://www.telit.com/contact-us/>

For detailed information about where you can buy the Telit modules or for recommendations on accessories and components visit:

<https://www.telit.com>

Our aim is to make this guide as helpful as possible. Keep us informed of your comments and suggestions for improvements.

Telit appreciates the user feedback on our information.

1.4. Symbol Conventions



Danger: This information **MUST** be followed or catastrophic equipment failure or personal injury may occur.



Warning: Alerts the user on important steps about the module integration.



Note/Tip: Provides advice and suggestions that may be useful when integrating the module.



Electro-static Discharge: Notifies the user to take proper grounding precautions before handling the product.

Table 1: Symbol Conventions

All dates are in ISO 8601 format, that is YYYY-MM-DD.

1.5. Related Documents

- LE910Cx Hardware User Guide, 1VV0301298
- LE920x4/LE910Cx AT Command User Guide, 80490ST10778A
- Telit EVB User Guide, 1VV0301249
- mPCIe IFBD HW USER GUIDE, 1VV0301483
- LE910/LE920 Digital Voice Interface Application Note, 80000NT11246A
- Event Monitor Application Note, 80000NT10028a
- PCI Express Mini Card Electromechanical Specification, Revision 2.1

2. GENERAL PRODUCT DESCRIPTION

2.1. Overview

The aim of this document is to present the possible and recommended hardware solutions useful for developing a product with the Telit LE910Cx-mPCIe module.

LE910Cx-mPCIe is the Telit platform for Mini PCIe applications, such as M2M applications, table PC, based on the following technologies:

- LTE / WCDMA networks for data communication
- Designed for industrial grade quality

In its most basic use case, the LE910Cx-mPCIe can be applied as a wireless communication front-end for mobile products, offering mobile communication features to an external host CPU through its rich interfaces. LE910Cx-mPCIe can further support customer software applications and security features. LE910Cx-mPCIe provides a software application development environment with sufficient system resources for creating rich on-board applications. With a dedicated application processor and embedded security resources, product developers and manufacturers can create products that guarantee fraud prevention and tamper evidence without additional effort for additional security precautions. LE910Cx-mPCIe is available in hardware and band variants as listed in [Product Variants and Frequency Bands](#).

2.2. Product Variants and Frequency Bands

LE910Cx modules bands combinations are listed below:

Product	2G Band	3G Band	4G Band	Region
LE910C1-NA	2, 3, 5, 8	1, 2, 4, 5, 8	2, 4, 12	North America
LE910C1-AP	-	1, 5, 6, 8, 19	1, 3, 5, 8, 9, 18, 19, 26, 28	Asia-Pacific
LE910C4-AP	-	1, 5, 6, 8, 19	1, 3, 5, 8, 9, 18, 19, 26, 28	Asia-Pacific
LE910C1-NS	-	-	2, 4, 5, 12, 25, 26	North America - Sprint
LE910C4-NF	-	2, 4, 5	2, 4, 5, 12, 13, 14, 66, 71	North America
LE910C1-NF	-	2, 4, 5	2, 4, 5, 12, 13, 14, 66, 71	North America
LE910C1-EU	3, 8	1, 3, 8	1, 3, 7, 8, 20, 28A	Europe
LE910C4-EU	3, 8	1, 3, 8	1, 3, 7, 8, 20, 28A	Europe
LE910C4-EUX	3, 8	1, 3, 8	1, 3, 7, 8, 20, 28A	Europe
LE910C1-SA	-	-	2, 4, 12, 14, 66	North America – AT&T

Product	2G Band	3G Band	4G Band	Region
LE910C1-ST	-	-	2, 4, 12, 66, 71	North America – T-Mobile
LE910C1-SV	-	-	4, 13	North America - Verizon
LE910C1-LA	2, 3, 5, 8	1, 2, 4, 5	1, 2, 3, 4, 5, 7, 28	Latin America
LE910C4-LA	2, 3, 5, 8	1, 2, 4, 5	1, 2, 3, 4, 5, 7, 28	Latin America
LE910C4-CN	3, 8	W: 1, 8 TDS: 34, 39	1, 3, 5, 8, 38, 39, 40, 41M	China
LE910C1-SAX	-	-	2, 4, 12, 66	North America - AT&T
LE910C1-SVX	-	-	4, 13	North America - Verizon
LE910C1-WWX	2, 3, 5, 8	1, 2, 4, 5, 6, 8, 19	1, 2, 3, 4, 5, 7, 8, 9, 12, 13, 14, 18, 19, 20, 25, 26, 28	Worldwide
LE910C4-WWX	2, 3, 5, 8	1, 2, 4, 5, 6, 8, 19	1, 2, 3, 4, 5, 7, 8, 9, 12, 13, 14, 18, 19, 20, 25, 26, 28	Worldwide
LE910C1-WWXD	2, 3, 5, 8	1, 2, 4, 5, 6, 8, 19	1, 2, 3, 4, 5, 7, 8, 9, 12, 13, 14, 18, 19, 20, 25, 26, 28	Worldwide
LE910C4-WWXD	2, 3, 5, 8	1, 2, 4, 5, 6, 8, 19	1, 2, 3, 4, 5, 7, 8, 9, 12, 13, 14, 18, 19, 20, 25, 26, 28	Worldwide

Table 2: Product Variants and their Frequency Bands

Refer to [Chapter Reference Table of RF Bands Characteristics](#) for detailed information about frequencies and bands.

2.3. Target Market

LE910Cx-mPCIe can be used for wide variety of applications, where low power consumption and low cost are required while achieving sufficient data rates:

- Mini PCIe applications
- Notebook PC
- M2M applications

2.4. Main Features

Function	Features
Modem	Multi-RAT cellular modem for voice and data communication LTE FDD Catx data rates per the module variant used. Carrier aggregation is not supported GSM/GPRS/EDGE WCDMA up to DC HSPA+, Rel.9 Regional variants with optimal choice of RF bands coverage of countries and MNOs State-of-the-art GNSS solution with GPS/GLONASS/BeiDou/Galileo/QZSS receiver

Function	Features
Digital audio subsystem	PCM/I2S digital audio interface Up to 48 kHz sample rate, 16 bit words
USIM ports – dual voltage	Class B and Class C support Hot swap support Clock rates up to 4 MHz
Application processor	Application processor to run customer application code 32 bit ARM Cortex-A7 up to 1.3 GHz running the Linux operating system Flash + DDR are large enough to allow for customer's own software applications
Interfaces	USB2.0 – USB port is typically used for: Flashing of firmware and module configuration Production testing Accessing the Application Processor's file system AT command access High-speed WWAN access to external host Diagnostic monitoring and debugging Communication between Java application environment and an external host CPU NMEA data to an external host CPU Peripheral Ports – I2C, UART GPIOs Antenna ports
Form factor	Full-Mini Card 52 pin, 50.95mm x 30mm x 1mm
Environment and quality requirements	The entire module is designed and qualified by Telit for satisfying the environment and quality requirements.
Single supply module	The module generates all its internal supply voltages.
RTC	No dedicated RTC supply, RTC is supplied by VBATT

Table 3: Functional Features

2.5. TX Output Power

Technology	Power (dBm)
2G LB	32.5
2G HB	29.5
3G/TD-SCDMA	23.5
4G FDD	22.5 @1RB

Table 4: Transmission Output Power

2.6. RX Sensitivity

Typical sensitivity levels are as follows:

Mode	Primary	Diversity	SIMO	3GPP
PCS 1900	-107.0	-	-	-102
DCS 1800	-106.5	-	-	-102
GSM 850	-108.0	-	-	-102
EGSM 900	-107.0	-	-	-102
WCDMA 2100 – B1	-108.5	-109.5	-111.0	-106.7
WCDMA 1900 – B2	-109.0	-110.0	-111.5	-104.7
WCDMA 1800 – B3	-107.0	-109.0	-109.0	-103.7
WCDMA AWS – B4	-109.0	-109.5	-111.5	-106.7
WCDMA 850 – B5	-109.5	-110.5	-112.0	-104.7
WCDMA 850 – B6	-109.5	-110.5	-112.0	-106.7
WCDMA 850 – B19	-109.5	-110.5	-112.0	-106.7
WCDMA 900 – B8	-109.0	-110.0	-111.5	-103.7
TDS CDMA 2000 – B34	-109.5	-	-	-105
TDS CDMA 1900 – B39	-109.5	-	-	-105
LTE 2100 – B1	-97.5	-98.0	-100.0	-96.3
LTE 1900 – B2	-96.5	-98.5	-98.5	-94.3
LTE 1800 – B3	-97.0	-99.0	-99.0	-93.3
LTE AWS – B4	-97.5	-98.5	-100.0	-96.3
LTE 850 – B5	-98.5	-100.0	-101.0	-94.3
LTE 2600 – B7	-97.0	-97.0	-99.0	-94.3
LTE 900 – B8	-98.0	-99.0	-100.5	-93.3
LTE 1800 – B9	-97.5	-98.5	-100.0	-95.3
LTE 700a – B12	-98.0	-99.0	-100.5	-93.3
LTE 700c – B13	-98.0	-99.0	-100.5	-93.3
LTE 700PS – B14	-97.5	-99.0	-100.0	-93.3
LTE 700b – B18	-98.5	-99.5	-101.0	-96.3
LTE 800 – B19	-98.5	-99.0	-101.0	-96.3
LTE 800 – B20	-98.5	-98.5	-101.0	-93.3
LTE 1900+ – B25	-96.0	-98.0	-98.0	-92.8

Mode	Primary	Diversity	SIM0	3GPP
LTE 850+ – B26	-98.5	-99.5	-101.0	-93.8
LTE 700 – B28A/B	-98.0	-100.0	-101.0	-94.8
LTE AWS-3 – B66	-97.5	-98.5	-100.0	-95.8
LTE600 – B71	-97.5	-97.0	-100.0	-93.5
LTE TDD 2600 – B38	-97.5	-98.0	-100.0	-96.3
LTE TDD 1900 – B39	-98.0	-99.0	-100.5	-96.3
LTE TDD 2300 – B40	-96.5	-98.0	-99.0	-96.3
LTE TDD 2500 – B41M	-96.5	-97.5	-99.0	-94.3

Table 5: RX Sensitivity Levels



Note: The sensitivity level has a deviation of approximately +/- <2dB per model, device and channel because the level shows typical value. LTE level is measured at BW 10M.

2.7. Mechanical Specifications

2.7.1. Dimensions

The overall dimensions of LE910Cx-mPCIe family are:

- Length: 50.95 mm, +0/-0.3mm
- Width: 30 mm, +0/-0.3mm
- Thickness : 3.2 mm, +/-0.15mm (Version with SIM holder : 4.62 mm, +/-0.15mm)

2.7.2. Weight

The nominal weight of the module;

With SIM holder: 10.3 grams

Without SIM holder: 9.1 grams

2.8. Temperature Range

Mode	Temperature	Note
Operating Temperature Range	-20°C ~ +55°C	The module is fully functional(*) in all the temperature range, and it fully meets the 3GPP specifications.
	-40°C ~ +85°C	The module is fully functional (*) in the whole temperature range. However, there may be some performance deviations in this extended range from the 3GPP requirements, which means that some RF parameters may deviate from the 3GPP specification on the order of a few dB. For example: the receiver sensitivity or maximum output power may be slightly degraded
Storage and non-operating Temperature Range	-40°C ~ +105°C	

Table 6: Temperature Range (*) Functional: the module is able to make and receive voice calls, data calls, SMS and make data traffic.

3. PINS ALLOCATION

3.1. Pin-out

Pin	Signal	I/O	Function	Type	Comment
Power Supply					
2	3V3_AUX	-	3.3V Main Power Supply	Power	
39	3V3_AUX	-	3.3V Main Power Supply	Power	
41	3V3_AUX	-	3.3V Main Power Supply	Power	
52	3V3_AUX	-	3.3V Main Power Supply	Power	
4	GND	-	Ground		
9	GND	-	Ground		
15	GND	-	Ground		
18	GND	-	Ground		
21	GND	-	Ground		
26	GND	-	Ground		
27	GND	-	Ground		
29	GND	-	Ground		
34	GND	-	Ground		
35	GND	-	Ground		
37	GND	-	Ground		
40	GND	-	Ground		
43	GND	-	Ground		
50	GND	-	Ground		
USB Interface					
36	USB D-	I/O	USB differential Data (-)		
38	USB D+	I/O	USB differential Data (+)		
Digital Voice Interface (DVI)					
45	PCM_CLK	I/O	Digital Audio Interface (BIT Clock)	1.8V	
47	PCM_TX	O	Digital Audio Interface (TX Out of the card)	1.8V	
49	PCM_RX	I	Digital Audio Interface (RX Into the card)	1.8V	
51	PCM_SYNC	I/O	Digital Audio Interface (Frame_Sync)	1.8V	
16	REF_CLK	O	Reference clock for external Codec	1.8V	

Pin	Signal	I/O	Function	Type	Comment
SIM Card Interface					
8	SIMVCC	I/O	External SIM signal – Power supply for the SIM	1.8 / 3V	
10	SIMIO	I/O	External SIM signal - Data I/O	1.8 / 3V	
12	SIMCLK	O	External SIM signal – Clock	1.8 / 3V	
14	SIMRST	O	External SIM signal – Reset	1.8 / 3V	
UART					
3	UART_RX	I	Serial data input (RX) from DTE	1.8V	
5	UART_TX	O	Serial data output (TX) to DTE	1.8V	
17	UART_RTS	O	Output Request To Send signal (RTS) to DTE	1.8V	
19	UART_CTS	I	Input for Clear To Send signal (CTS) from DTE	1.8V	
Miscellaneous Functions					
1	WAKE_N	O	Active low output signal used to wake up the system from stand-by	3.3V	
20	W_DISABLE_N	I	Active low signal for wireless disabling (Flight mode)	3.3V	
22	PERST_N	I	Active low functional reset input to the card	3.3V	
28	VAUX_PWRMON	O	Supply output for external accessories / Power ON monitor	1.8V	
42	LED_WWAN_N	O	Active low, open drain signal for WWAN LED driving, used to provide module's status indication	3.3V	
30	I2C_SCL	I/O	I2C clock	1.8V	Internally Pull Up 2.2kΩ to 1.8V
32	I2C_SDA	I/O	I2C Data	1.8V	Internally PU 2.2kΩ to 1.8V
48	GPS_LNA_EN	O	Enables the external regulator for GPS LNA	1.8V	
Reserved					
6	Reserved	-			
7	Reserved	-			
11	Reserved	-			
13	Reserved	-			
23	Reserved	-			

Pin	Signal	I/O	Function	Type	Comment
24	Reserved	-			
25	Reserved	-			
31	Reserved	-			
33	Reserved	-			
44	Reserved	-			
46	Reserved	-			

Table 7: Pin-out Information

Warning: There are two different types of mPCIe modules; LE910Cx mPCIe V1 and LE910Cx mPCIe V2. Two types of mPCIe modules have different pinout on PCM signals but the rest of the pins are exactly the same.



mPCIe Pin-out	mPCIe V1	mPCIe V2
47	PCM_RX	PCM_TX
49	PCM_TX	PCM_RX

LE910Cx mPCIe V2 was developed to provide improved thermal performance with the large solder resist opening area on the bottom side of the module. For more details, refer to :

80576DSW10190A LE910Cx mPCIe HW Release notes.



Warning: Reserved pins must be left floating.

3.2. Pin-out for the Full Compatibility with PCI Express MiniCard Specification.

Some pins of the LE910Cx mPCIe are different from the pin-out defined by the PCI Express miniCard specification to support various functions of Telit.

But full compatibility with both PCI Express miniCard specification and Telit's older xE910 mPCIe models was required. To meet this requirement, this model was developed.

Some pins of LE910Cx mPCIe which are different from the PCI Express miniCard specification have been changed to reserved. For more details, refer to the following Pin-out.

Pin	Signal	I/O	Function	Type	Comment
Power Supply					
2	3V3_AUX	-	3.3V Main Power Supply	Power	
39	3V3_AUX	-	3.3V Main Power Supply	Power	
41	3V3_AUX	-	3.3V Main Power Supply	Power	
52	3V3_AUX	-	3.3V Main Power Supply	Power	
4	GND	-	Ground		
9	GND	-	Ground		
15	GND	-	Ground		
18	GND	-	Ground		
21	GND	-	Ground		
26	GND	-	Ground		
27	GND	-	Ground		
29	GND	-	Ground		
34	GND	-	Ground		
35	GND	-	Ground		
37	GND	-	Ground		
40	GND	-	Ground		
43	GND	-	Ground		
50	GND	-	Ground		
USB Interface					
36	USB D-	I/O	USB differential Data (-)		
38	USB D+	I/O	USB differential Data (+)		
SIM Card Interface					
8	SIMVCC	I/O	External SIM signal – Power supply for the SIM	1.8 / 3V	
10	SIMIO	I/O	External SIM signal - Data I/O	1.8 / 3V	
12	SIMCLK	O	External SIM signal – Clock	1.8 / 3V	
14	SIMRST	O	External SIM signal – Reset	1.8 / 3V	
Miscellaneous Functions					

Pin	Signal	I/O	Function	Type	Comment
1	WAKE_N	0	Active low output signal used to wake up the system from stand-by	3.3V	
20	W_DISABLE_N	I	Active low signal for wireless disabling (Flight mode)	3.3V	
22	PERST_N	I	Active low functional reset input to the card	3.3V	
42	LED_WWAN_N	0	Active low, open drain signal for WWAN LED driving, used to provide module's status indication	3.3V	
Reserved					
3	Reserved	-			
5	Reserved	-			
6	Reserved	-			
7	Reserved	-			
11	Reserved	-			
13	Reserved	-			
16	Reserved	-			
17	Reserved	-			
19	Reserved	-			
23	Reserved	-			
24	Reserved	-			
25	Reserved	-			
28	Reserved	-			
30	Reserved	-			
31	Reserved	-			
32	Reserved	-			
33	Reserved	-			
44	Reserved	-			
45	Reserved	-			
46	Reserved	-			
47	Reserved	-			
48	Reserved	-			
49	Reserved	-			
51	Reserved	-			

Table 8: Pin-out PCI Express MiniCard Specification

Note: For more details about the new models, please contact to Telit Technical Support:



- TS-EMEA@telit.com
- TS-AMERICAS@telit.com
- TS-APAC@telit.com
- TS-SRD@telit.com

4. POWER SUPPLY

The power supply circuitry and board layout are a very important part in the complete product design and they strongly reflect on the overall performance of the product, so please read carefully the requirements and the guidelines that will follow for a proper design.

4.1. Power Supply Requirements

The external power supply must be connected to VBATT signal and must fulfil the following requirements:

Power Supply	Value
Nominal Supply Voltage	3.3 V
Supply Voltage Range	3.1 ~ 3.6 V
Max ripple on module input supply	30 mV

Table 9: Power Supply Requirements

Note: The Operating Voltage Range MUST never be exceeded; care must be taken when designing the power section of the application to avoid having an excessive voltage drop.

If the voltage drop exceeds the limits, it could cause the module to Power Off.



The overshoot voltage (regarding MAX Extended Operating Voltage) and drop in voltage (regarding MIN Extended Operating Voltage) MUST never be exceeded;

The “Extended Operating Voltage Range” can only be used with the complete assumption and application of the HW User guide suggestions.

4.2. Power Consumption

For the complete power consumption specification, please refer to the specific Module’s Hardware User guide listed in 1.5 Related Documents

4.3. General Design Rules

The main guidelines for the Power Supply Design embrace three different design steps:

- The electrical design
- The thermal design
- The PCB layout.

4.3.1. Electrical Design Guidelines

The electrical design of the power supply strongly depends on the power source where this power is drained.

- +5V input (typically PC internal regulator output)
- +12V input (typically automotive)

4.3.1.1. +5V Source Power Supply Design Guidelines

- The desired output for the power supply is 3.3V, so there's not a big difference between the input source and the desired output and a linear regulator can be used. A switching power supply will not be suitable because of the low drop out requirements.
- When using a linear regulator, a proper heat sink shall be provided in order to dissipate the generated heat.
- A Bypass low ESR capacitor of adequate capacity must be provided in order to cut the current absorption peaks close to the Module, a 100 μ F capacitor is usually suitable.
- Make sure the low ESR capacitor on the power supply output rated at least 10V.

An example of linear regulator with 5V input is:

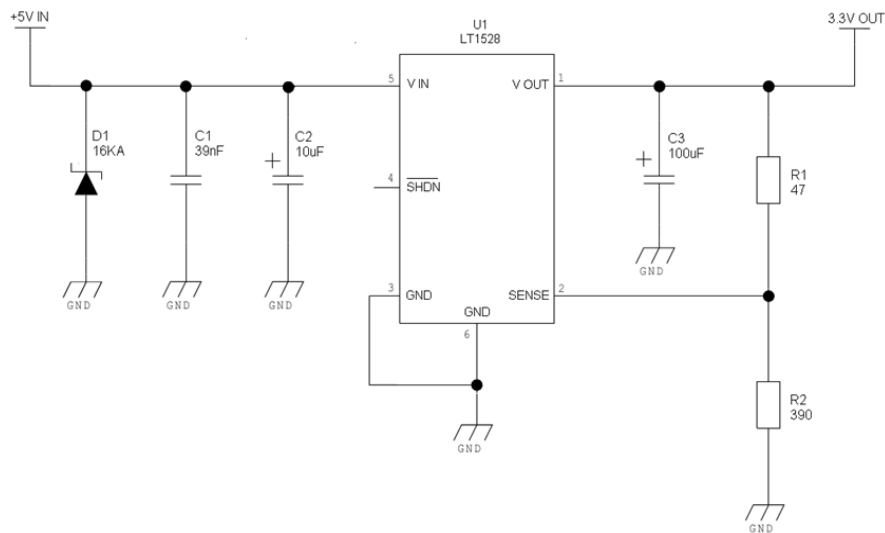


Figure 1: An Example of Linear Regulator with 5V Input

4.3.1.2. +12V Source Power Supply Design Guidelines

- The desired output for the power supply is 3.3V, so due to the big difference between the input source and the desired output, a linear regulator is not suitable and shall not be used. A switching power supply will be preferable because of its better efficiency.
- When using a switching regulator, a 500kHz or more switching frequency regulator is preferable because of its smaller inductor size and its faster transient response. This allows the regulator to respond quickly to the current peaks absorption.
- In any case the frequency and Switching design selection is related to the application to be developed since the switching frequency could also generate EMC interferences.
- For car PB battery the input voltage can rise up to 15,8V and this should be kept in mind when choosing components: all components in the power supply must withstand this voltage.
- A Bypass low ESR capacitor of adequate capacity must be provided in order to cut the current absorption peaks, a 100μF capacitor is usually suitable.
- Make sure the low ESR capacitor on the power supply output is rated at least 10V.
- For Car applications, a spike protection diode should be inserted close to the power input, in order to clean the supply from the spikes.

An example of switching regulator with 12V input is in the below schematic:

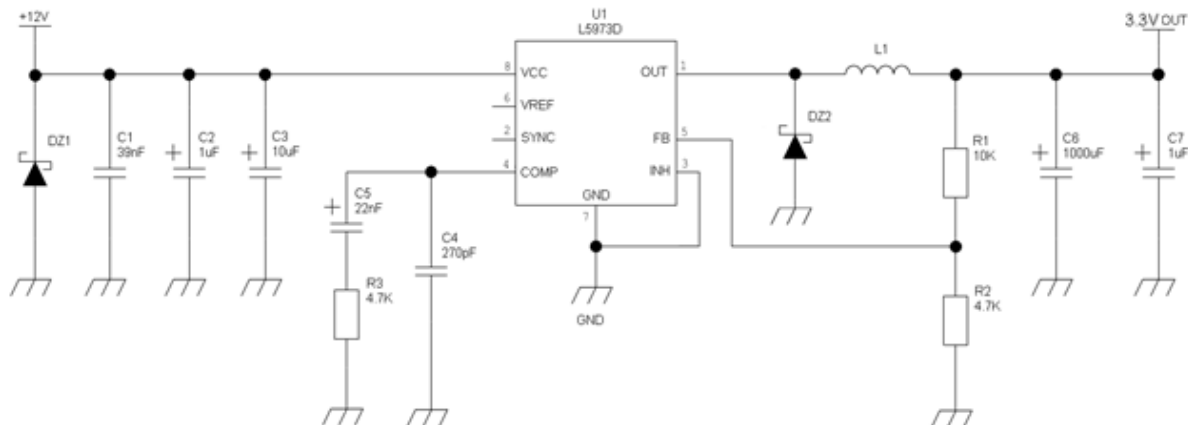


Figure 2: An Example of Switching Regulator with 12V Input

4.3.2. Thermal Design Guidelines

The thermal design of the application board and the power supply heat sink should be done with the following specifications:

- Typical average current consumption during xE910Cx Mini PCIe transmission @ Max PWR level at min battery level (LTE) : 700 mA
- Average current during idle (USB enabled): 30 mA
- Average current during idle (USB disabled): 5 mA
- Average current during airplane mode (USB disabled): 2 mA

Considering the very low current during Idle, especially if the Power Saving function is enabled, it is possible to consider from the thermal point of view that the device absorbs significant current mainly during the Data session. In LTE/WCDMA/HSPA mode, the xE910Cx Mini PCIe emits RF signals continuously during transmission. Therefore, special attention must be paid to how to dissipate the heat generated.

The LE910Cx mPCIe card is designed to conduct the heat flow from the module IC's towards the bottom of the mPCIe PCB across GND metal layers

For best performance, the application board's copper layers should be used to dissipate heat out of the mPCIe card.

In order to ensure proper thermal flow from the mPCIe card to the application board, the mPCIe card bottom side should be thermally connected to the application board top side via proper thermal pad.

The area to which the thermal pad is attached to on the application board must be designed as a large ground pad (with solder mask exposed).



Note: The average consumption during transmissions depends on the power level at which the device is requested to transmit by the network. The average current consumption therefore varies significantly.

4.3.3. Power Supply PCB Layout Guidelines

The GSM system is made in a way that the RF transmission is not continuous, otherwise it is packed into bursts at a base frequency of about 216 Hz, and the relative current peaks can be as high as about 2.4A. Therefore the power supply must be designed in such a way to withstand with these current peaks without large voltage drops; this means that both the electrical design and the board layout must be designed for this current flow. If the voltage drop during the peak current absorption is too much, then the device may even shutdown as a consequence of the drop in the supply voltage.



Note: The electrical design for the Power supply should be made ensuring it will be capable of a peak current output of at least 2.4 A.

As seen on the electrical design guidelines, the power supply shall have a low ESR capacitor on the output to cut the current peaks on the input to protect the supply from spikes. The placement of this component is crucial for the correct working of the circuitry. A misplaced component can be useless or can even decrease the performance of the power supply.

- The Bypass low ESR capacitor must be placed close to the Telit LE910Cx-mPCIe power input pads or if the power supply is of the switching type it can be placed near the inductor to cut the ripple provided the PCB trace from the capacitor to the LE910Cx-MPCIE is wide enough to ensure a dropless connection even during an 1A current peak.
- The protection diode must be placed close to the input connector where the power source is drained.
- The PCB traces from the input connector to the power regulator IC must be wide enough to ensure no voltage drops occur when a 1A current peak is absorbed.

- The PCB traces to the LE910Cx-mPCIe and the Bypass capacitor must be wide enough to ensure that no significant voltage drops occur. This is for the same reason as previous point. Try to keep this trace as short as possible.
- To reduce the EMI due to switching, it is important to keep the mesh involved very small; therefore the input capacitor, the output diode (if not embodied in the IC) and the regulator have to form a very small loop. This is done in order to reduce the radiated field (noise) at the switching frequency (100-500 kHz usually).
- A dedicated ground for the Switching regulator separated by the common ground plane is suggested.
- The placement of the power supply on the board should be done in such a way to guarantee that the high current return paths in the ground plane are not overlapped to any noise sensitive circuitry as the microphone amplifier/buffer or earphone amplifier.
- The power supply input cables should be kept separate from noise sensitive lines such as microphone/earphone cables.
- The insertion of EMI filter on VBATT pins is suggested in those designs where antenna is placed close to battery or supply lines.
- A ferrite bead like Murata BLM18EG101TN1 or Taiyo Yuden P/N FBMH1608HM101 can be used for this purpose.

The below figure shows the recommended circuit:

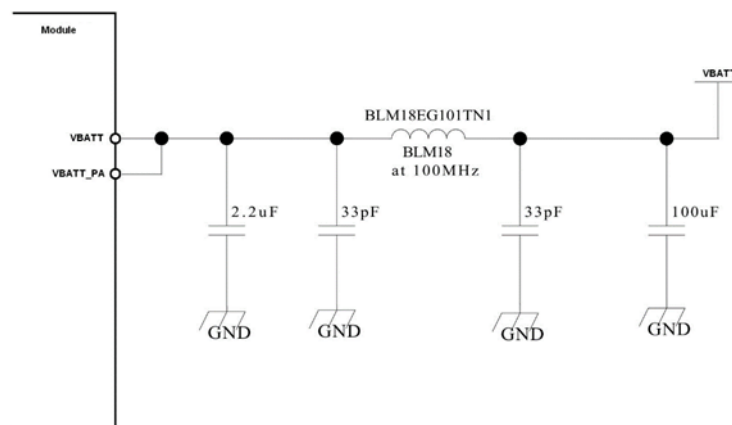


Figure 3: Recommended Circuit

4.4. VAUX Power Output

A regulated power supply output is provided to supply small devices from the module. This output is active when the module is ON and goes OFF when the module is shut down. The operating range characteristics of the supply are as follows:

Item	Min	Typical	Max
Output Voltage	1.75 V	1.80 V	1.85 V
Output Current			100 mA
Output Bypass Capacitor			1 μ F

Table 10: Operating Range Characteristics of the Supply



Note: The Output Current MUST never be exceeded; care must be taken in the design of the application section to avoid having an excessive current consumption. If the Current exceeds the limits it may cause a Power Off of the module.



Warning: The current consumption from VAUX/PWRMON increases the modem temperature

4.5. GNSS LNA BIAS

A dedicated regulated bias is provided to support active antenna GNSS applications. The operating range characteristics of the supply are as follows:

Item	Min	Typical	Max
Output Voltage	0 V	3 V	3.1 V
Output Current			100 mA

Table 11: Operating Range Characteristics



Note: Follow LE9x0 AT Command User Guide 80407ST10116A to control dedicated enable GPS_LNA_EN (pin 48) for LE910Cx-mPCIe on board LNA BIAS output through GNSS antenna port.



Note: In case internal bias is not sufficient, the user can add an external bias which can be controlled by pin 48 GPS_LNA_EN, using AT command. In this case, a DC block should be used to avoid conflicts with miniPCIe adapter internal LDO.

5. ELECTRICAL SPECIFICATION

5.1. Absolute Maximum Ratings – Not Operational



Warning: A deviation from the value ranges listed below may harm the LE910Cx module.

Symbol	Parameter	Min	Max	Unit
VBATT	Battery supply voltage on pin VBATT	- 0.5	4.0	[V]

Table 12: Absolute Maximum Ratings – Not Operational

5.2. Recommended Operating Conditions

Symbol	Parameter	Min		Max	Unit
T_{amb}	Ambient temperature	-40	+25	+85	[°C]
VBATT	Battery supply voltage on pin VBATT	3.1	3.3	3.6	[V]
I_{VBATT + I_{VBATT_PA}}	Peak current to be used to dimension decoupling capacitors on pin VBATT	-	-	2400	[mA]

Table 13: Recommended Operating Conditions

6. DIGITAL SECTION

6.1. Logic Levels

Parameter	Min	Max
ABSOLUTE MAXIMUM RATINGS		
Input level on any digital pin (CMOS 1.8) with respect to ground	-0.3V	2.16V
Input level on any digital pin (CMOS 1.8) with respect to ground when VBATT is not supplied	-0.3V	0.3V
Input level on any digital pin (CMOS 3.3) with respect to ground	-0.3V	3.6V
Input level on any digital pin (CMOS 3.3) with respect to ground when VBATT is not supplied	-0.3V	0.3V
OPERATING RANGE – INTERFACE LEVELS 1.8 V CMOS:		
Input high level	1.25V	1.95V
Input low level	0V	0.6V
Output high level	1.4V	--
Output low level	--	0.45V
Pull-up resistance	10k Ω	390 [k Ω]
Pull-up resistance	10k Ω	390 [k Ω]
Input capacitance	--	5pF
Low-level input leakage current, no pull-up	- 1 μ A	--
High-level input leakage current, no pull-down	--	+ 1 μ A
Drive strength	2mA	16mA
OPERATING RANGE – INTERFACE LEVELS 3.3 V CMOS:		
Input high level	2V	3.3V
Input low level	0V	0.8V
Output high level	2V	--
Output low level	--	0.45V
OPERATING RANGE – SIM CARD PADS @ 2.95 V		
Input high level	2.1V	3.1V
Input low level	#FIELD!	0.55V
Output high level	2.25V	3.1V
Output low level	0V	0.4V

Parameter	Min	Max
Low-level input leakage current, no pull-up	- 10uA	
High-level input leakage current, no pull-down		10uA
Pull-up resistance	10kΩ	100kΩ
Pull-down resistance	10kΩ	100kΩ
Input capacitance		5pF

Table 14: Logic Levels Minimum and Maximum

6.2. Power On

The LE910Cx-mPCIe will automatically power on as soon as VBATT is applied to the module. The LE910Cx-mPCIe is not yet activated because the module SW initialization process is still in progress internally. It takes some time to fully complete the HW and SW initialization of the module. For this reason, it is impossible to access LE910Cx-PCIe during the Initialization state. The VAUX / PWRMON pin will be then set at the high logic level when the pins and interfaces are configured.

As shown below the LE910Cx-mPCIe becomes operational (in the Activation state) at least 20 seconds after power is applied:

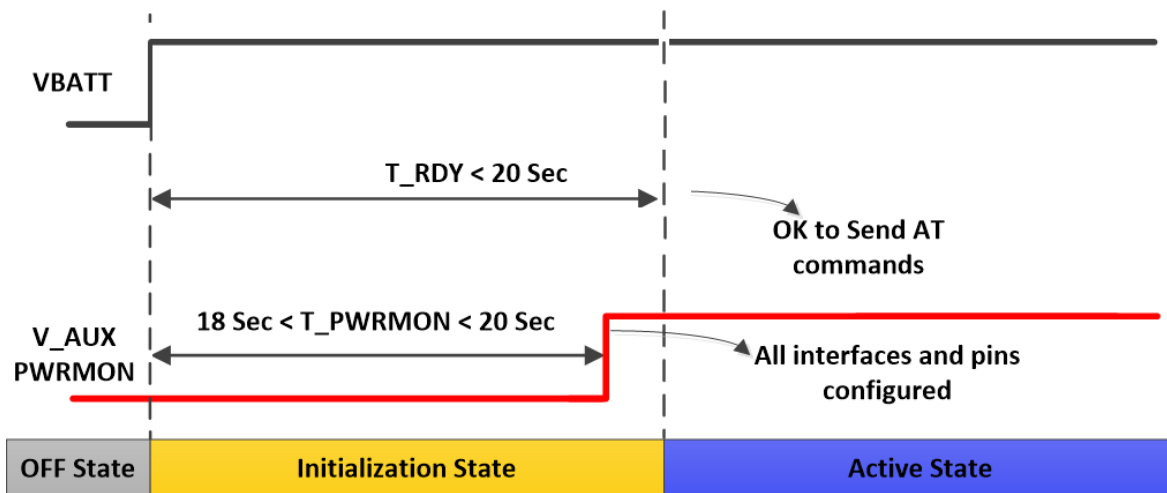


Figure 4: Operational LE910Cx-mPCIe



Note: To turn on the LE910Cx-mPCIe module, the W_DISABLE_N pin must not be asserted low.

The following flow chart shows the proper turn on procedure:

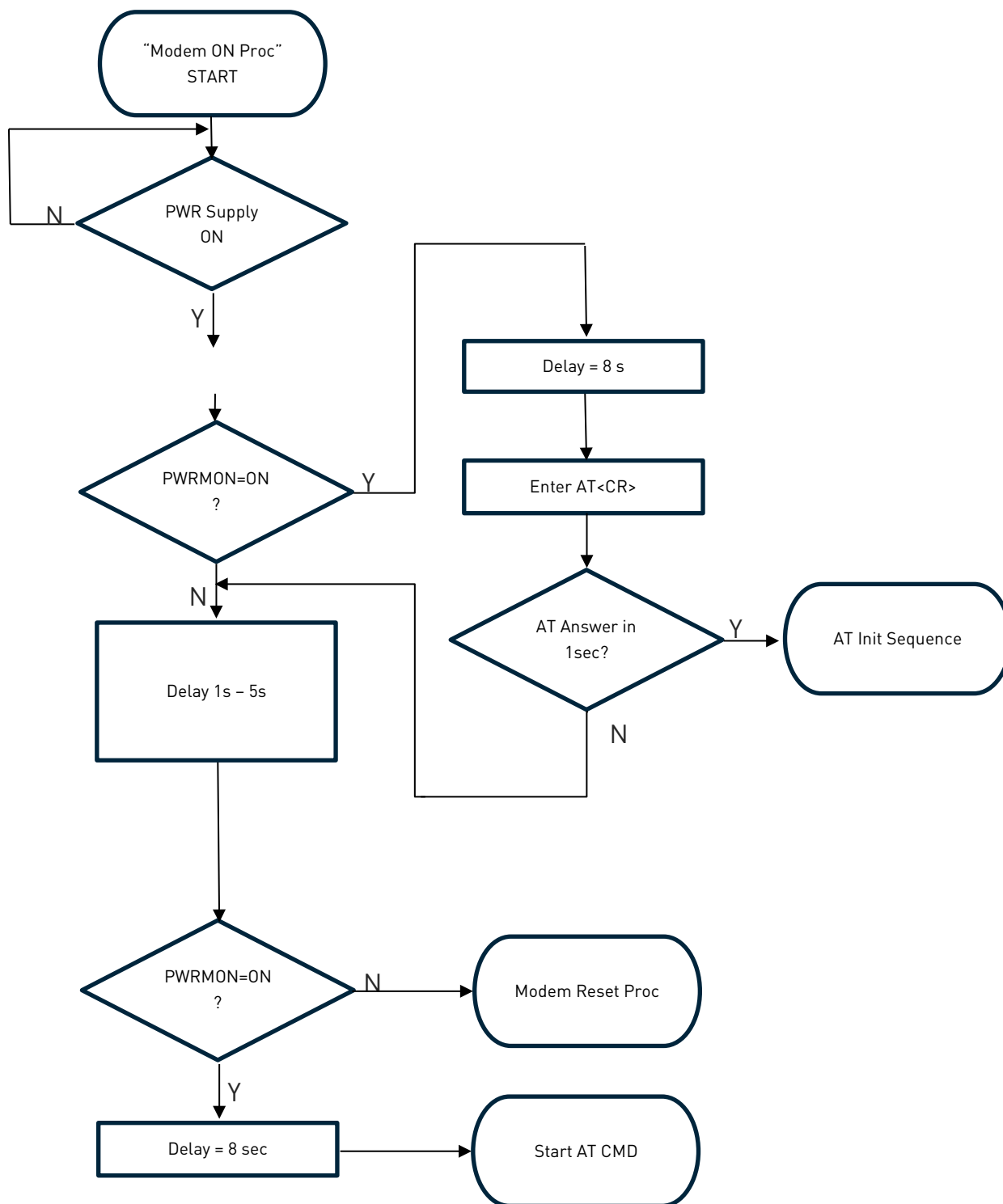


Figure 5: Turn on Procedure Flow Chart

A flow chart showing the AT commands managing procedure is displayed below:

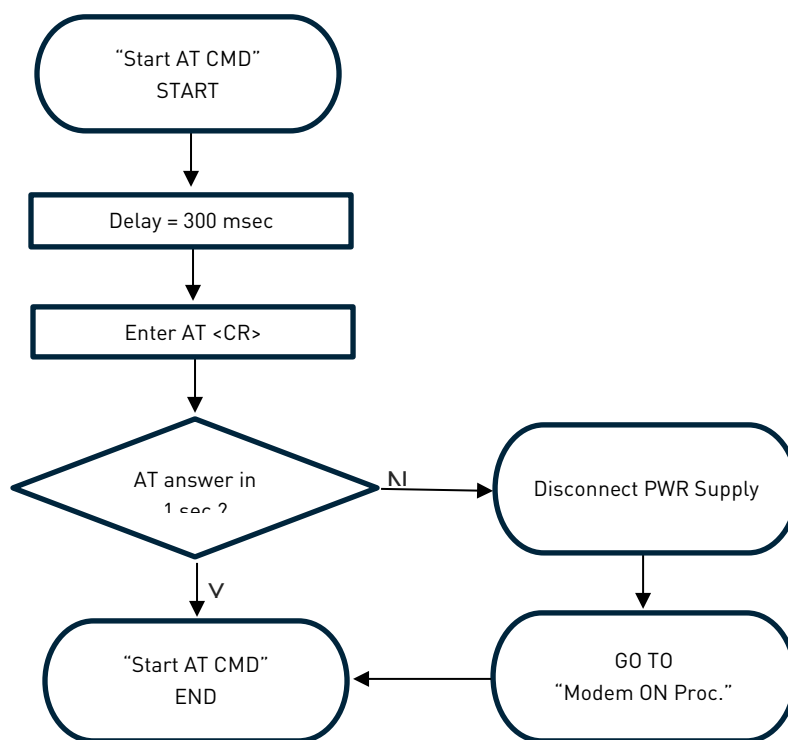


Figure 6: AT Commands Managing Procedure Flow Chart

6.3. Unconditional Restart

To unconditionally restart the LE910Cx-mPCIe, the pad PERST_N (pin 22) must be tied low for at least 200 milliseconds and then released.

The hardware unconditional restart must not be used during normal device operation as it does not detach the device from the network. It should be kept as an emergency exit procedure to be performed in the rare event that the device gets stuck waiting for some network or SIM responses.

Do not use any pull up resistor on the PERST_N line nor any totem pole digital output. Using pull up resistors may bring to latch up problems on the LE910Cx-mPCIe.

The line PERST_N must be connected only in open collector configuration; the transistor must be connected as close as possible to the PERST_N pin.

The unconditional hardware restart must always be implemented on the application board as the software must be able to use it as an emergency exit procedure.

PIN DESCRIPTION

Signal	Function	I/O	PIN
PERST_N	Active low functional reset to the card	I	22

Table 15: PERST_N Signal

OPERATING LEVELS

The PERST_N line is 3.3V tolerant as specified by PCI Express Mini Card Electromechanical Specification Revision 2.1 standard.



Warning: The hardware unconditional Reset must not be used during normal operation of the device since it does not detach the device from the network. It shall be kept as an emergency exit procedure.

A typical circuit for implementing an unconditional reset is shown below:



Note: Recommended values $R2 = 47k\Omega$, $R1 = 10k\Omega$.



Note: In order to avoid a back powering effect it is recommended to prevent any HIGH logic level signal from being applied to the digital pins of the LE910Cx-mPCIe when the module is powered off or during a reboot transition.

Using bidirectional level translators which do not support High Z mode during power off is not recommended.



Note: For Unconditional Restart W_DISABLE_N pin must not be asserted low otherwise the module will shutdown itself and will not restart (this can be used as emergency shutdown but not recommended)

For proper shutdown refer to [Section Power OFF procedure](#).

In the following flow chart is detailed the proper restart procedure:

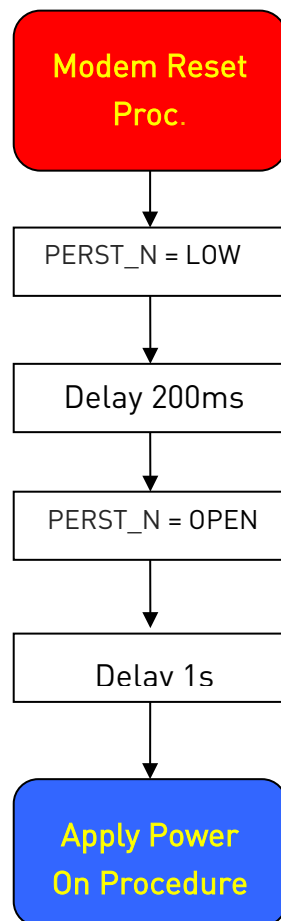


Figure 7: Restart Procedure



Note: In order to prevent a back powering effect it is recommended to prevent any HIGH logic level signal from being applied to the digital pins of the LE910Cx-mPCIe when the module is powered OFF or during an ON/OFF transition.

Using bidirectional level translators which do not support High Z mode during power off is not recommended.

6.4. Power OFF Procedure

To turn OFF the LE910Cx-mPCIe module, the W_DISABLE_N pin must be asserted low, otherwise the module will be power up immediately. For a proper shutdown operation, use the AT#SHDN command. When a shutdown command is sent, the LE910Cx enters the finalization state and at the end of the finalization process shuts down PWRMON.

The duration of the finalization state can differ according to the current situation of the module, so a value cannot be defined.

Usually, it will take more than 15 seconds from sending a shutdown command until a complete shutdown is achieved. The DTE should monitor the status of PWRMON to observe the actual power-off.

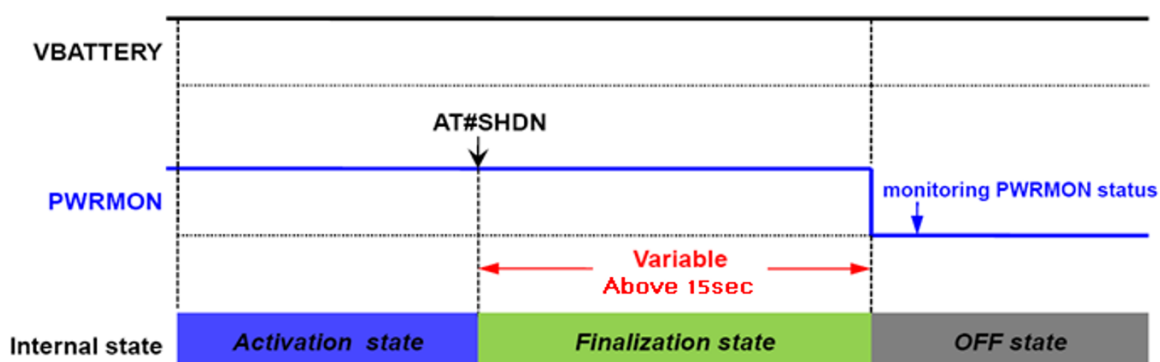


Figure 8: PWRMON Process

Warning: Please carefully follow the recommended procedure for Power Off.



Removing the power supply can only be performed when the unit has reached the power off state.

Failure to follow the recommended shut-down and power off procedures might damage the device and consequently void the warranty.

The below flow chart is detailed the proper power OFF procedure:

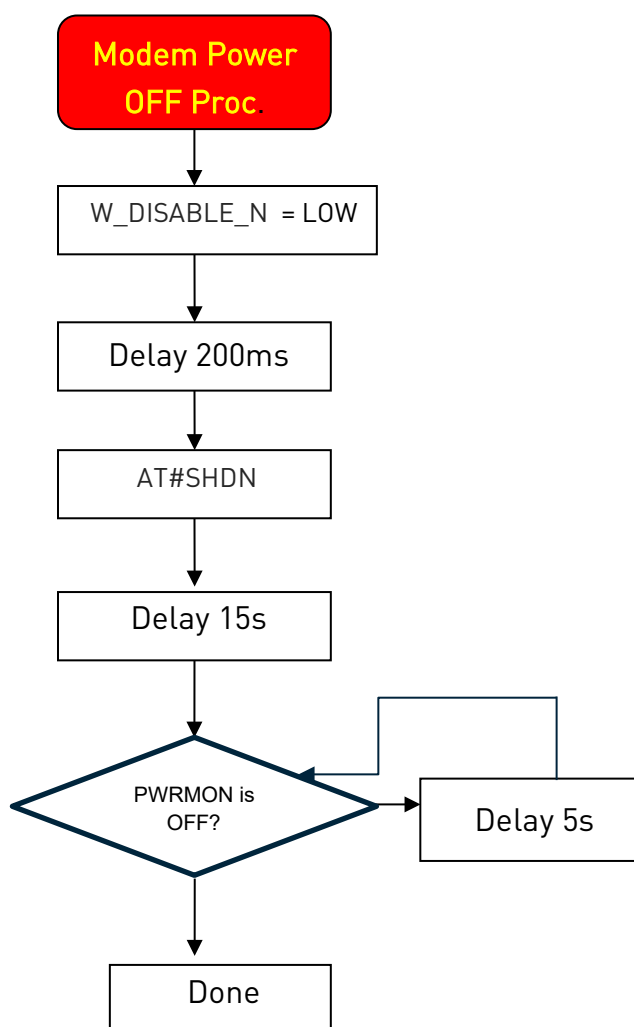


Figure 9: Power OFF Procedure



Note: Software shutdown feature is not supported on early engineering samples.

6.5. Control Signals

Pin	Signals	I/O	Function	Type
1	WAKE_N	O	Active low signal used to wake up the system from stand-by	3.3V
20	W_DISABLE_N	I	Active low signal for wireless disabling (Airplane mode)	3.3V
22	PERST_N	I	Active low functional reset to the card	3.3V
42	LED_WWAN_N	O	Active low, open drain signal for WWAN LED driving, used to provide module's status indication	3.3V

Pin	Signals	I/O	Function	Type
48	GPS_LNA_EN	0	Enables the external regulator for GPS LNA	1.8V

Table 16: Control Signals

6.5.1. WAKE_N

WAKE_N is driven, by default, by the module according the PCI Express Mini Card Electromechanical Specification Revision 2.1.



Note: WAKE_N is not supported in host using PCI Express Mini Card Electromechanical Specification Revision 1.1 and below.



Note: WAKE_N signal is not active by default. If desired it can be configured remapping an event under monitoring through at#evmoni. For details refer to the AT command user guide.

The below picture shows the internal WAKE_N driver:

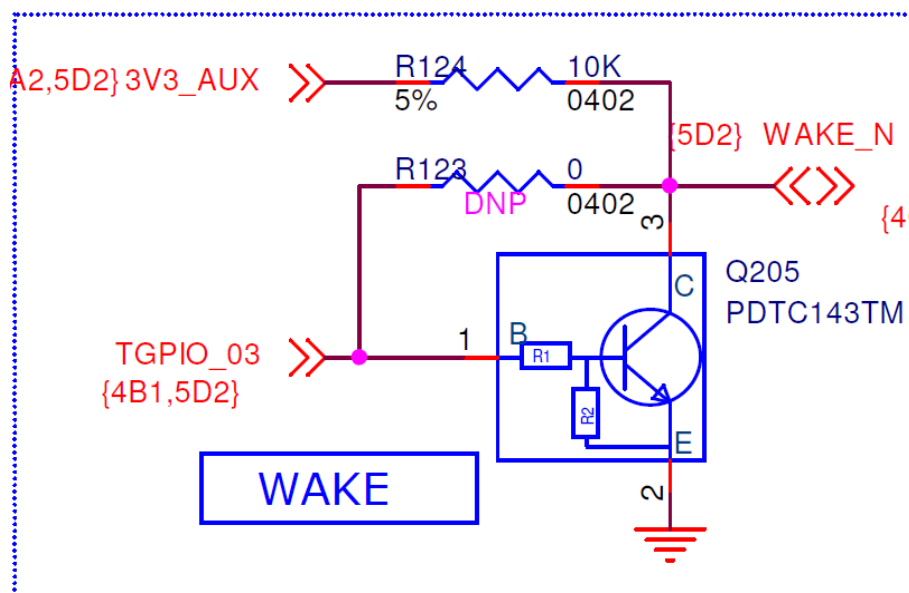


Figure 10: Internal WAKE_N Driver

The WAKE_N output may be connected to an edge sensitive application input (for example a microcontroller input with IRQ enabled). No external pull-up is needed, since it is internally implemented.

EXAMPLE: In the following example, a RING monitor activates the WAKEUP signal. (For more information read Event Monitor Application Note 80000NT10028a).

```

AT#ENAEVMONI=0                //disable all events
AT#GPIO=3,0,1                  //Set GPIO3=>'0', "WAKE signal reset"
AT#ENAEVMONICFG=3,1,2          //AT port setting
AT#EVMONI="RING",0,1,3         //event 0-RING, after 3 rings
AT#EVMONI="RING",0,0,"AT#GPIO=3,1,1" //GPIO3=>'1', "WAKE signal active"
AT#EVMONI="RING",1             //event 0-RING enabled
AT#EVMONI="GPIO1",1,1,3        //event 1-GPIO3
AT#EVMONI="GPIO1",1,2,1        //when goes hi
AT#EVMONI="GPIO1",1,3,5        //after 5s
AT#EVMONI="GPIO1",1,0," AT#GPIO=3,0,1" //Set GPIO3=>'0', "WAKE signal
                                     ///reset"
AT#EVMONI="GPIO1",1           //event 1-GPIO3 enabled
AT#ENAEVMONI=1                //enable all events

```

6.5.2. W_DISABLE_N

W_DISABLE_N is used to force the module into airplane mode. Thanks to its internal pull-up, leaving this pin unconnected allows the module to operate normally. This switch follows the behavior as described in the PCI Express Mini Card Electromechanical Specification Revision 2.1.

6.5.3. LED_WWAN_N

LED_WWAN# is driven, by default, by the module according the PCI Express Mini Card Electromechanical Specification Revision 2.1. If desired, LED behavior can be configured by adjusting the software settings. The following picture shows the internal LED_WWAN_N driver and the recommended connection to a LED:

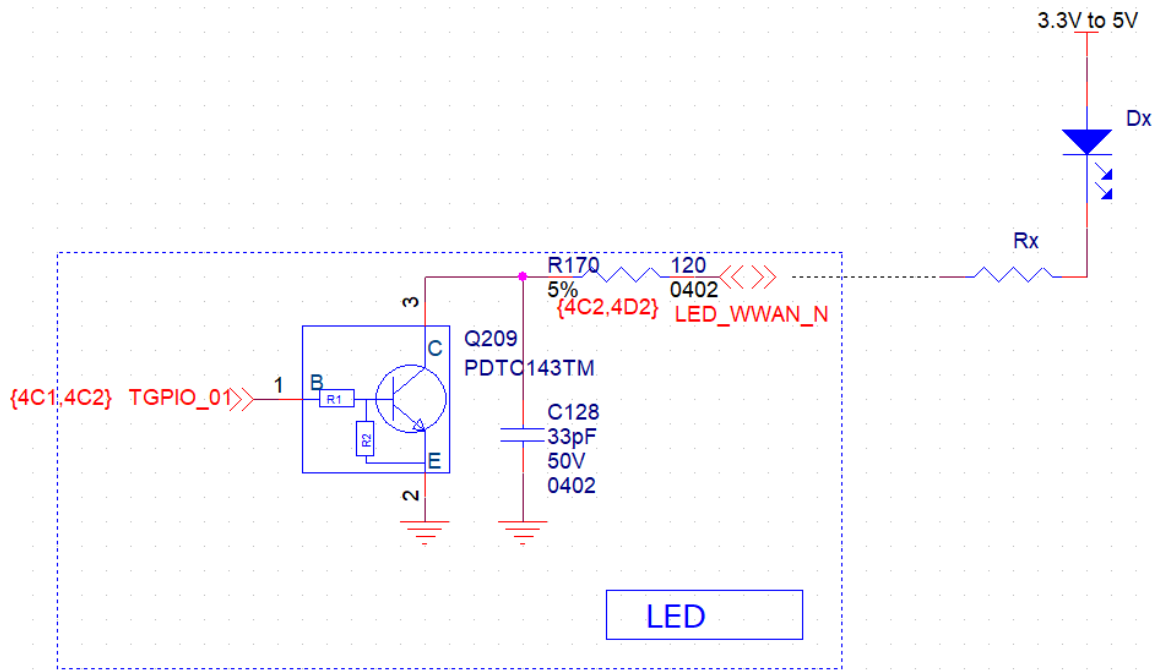


Figure 11: Internal LED_WWAN_N Driver and Recommended Connection to a LED



Note: THIS SIGNAL IS NOT ACTIVE BY DEFAULT. REFER TO AT#SLED DESCRIPTION IN THE AT COMMAND USER GUIDE.

6.5.4. PERST_N

PERST_N is used to reset the LE910Cx-mPCIe. Whenever this signal is pulled low, the LE910Cx-mPCIe is reset. When the device is reset it stops any operation. After the release of the reset, the LE910Cx is unconditionally restarted, without performing any detach operation from the network where it is registered. The reset signal must not be used to normally restart the device, but only as an emergency exit in the rare case the device gets stuck waiting for a network response.

PERST_N is internally controlled on start-up to achieve a proper power-on reset sequence, so there's no need to control this pin on start-up. It may only be used to reset a device already turned on that is not responding to any commands.



Note: Do not use this signal to power cycle the LE910Cx-mPCIe. Use the AT#SHDN command instead.

Parameter	Min	Max
PERST_N Input high	2.0V	3.6V
PERST_N Input low	- 0.5V	0.8V

Table 17: PERST_N Signal

6.6. Hardware Interfaces

Following table below summarize the hardware interfaces for LE910Cx-mPCIe:

Interface	LE910Cx-mPCIe
USB	USB2.0
I2C	For sensors, audio control
UART	HS-UART (up to 4 Mbps)
Audio I/F	I2S/PCM
USIM	Dual voltage (1.8V/2.85V)
Antenna ports	2 for Cellular, 1 for GNSS

Table 18: Hardware Interfaces for LE910Cx-mPCIe

6.6.1. USB Port

The LE910Cx-mPCIe module includes a Universal Serial Bus (USB) transceiver, which operates at USB high-speed (480 Mbits/sec). It can also operate with USB full-speed hosts (12 Mbits/sec).

It is compliant with the USB 2.0 specification and can be used for control and data transfers as well as for diagnostic monitoring and firmware update.

The USB port is typically the main interface between the LE910Cx-mPCIe module and OEM hardware.



Note: The USB_D+ and USB_D- signals have a clock rate of 480 MHz. The signal traces must be routed carefully. Minimize trace lengths, number of vias, and capacitive loading. The impedance value should be as close as possible to 90 Ohms differential.

Table below lists the USB interface signals:

Signal	Pin	Usage
USB_D-	36	Minus (-) line of the differential, bi-directional USB signal to/from the peripheral device

Signal	Pin	Usage
USB_D+	38	Plus (+) line of the differential, bi-directional USB signal to/from the peripheral device

Table 19: USB Interface Signals



Note: USB_VBUS controlled internally by TGPI0_10. For disabling/enabling use at commands via UART port. For example:

at#gpio=10,0,1 will disable USB_VBUS

at#gpio=10,1,1 will enable USB_VBUS

For more information follow 80407ST10116A, LE9x0 AT Command User Guide.



Note: Even if USB communication is not used, it is still highly recommended to place an optional USB connector on the application board. At least test points of the USB signals are required since the USB physical communication is needed in the case of SW update.

6.6.2. Serial Port

The serial port is typically a secondary interface between the LE910Cx-mPCIe module and OEM hardware. MODEM SERIAL PORT 1(Main) is available on LE910Cx-mPCIe adaptor

Several configurations can be designed for the serial port on the OEM hardware.

The most common configurations are:

- RS232 PC com port
- Microcontroller UART @ 1.8V (Universal Asynchronous Receive Transmit)
- Microcontroller UART @ 3.3V/5V or other voltages different from 1.8V

Depending on the type of serial port on the OEM hardware, a level translator circuit may be needed to make the system operate. The only configuration that does not need level translation is the 1.8V UART.

The levels for LE910Cx UART are the CMOS levels as described in 6.1 Logic Levels

6.6.2.1. Modem Serial Port 1 Signals

Serial Port 1 on LE910Cx-mPCIe is a +1.8V UART with 4 RS232 signals. It differs from the PC-RS232 in signal polarity (RS232 is reversed) and levels.

List of the signals of LE910Cx-mPCIe serial port:

RS232 Pin	Signal	Pin	Name	Usage
2	RXD - UART_TX	5	Transmit line	Output transmit line of the LE910Cx-mPCIe UART
3	TXD - UART_RX	3	Receive line	Input receive line of the LE910Cx-mPCIe UART
5	GND	4,9,15....	Ground	Ground
7	RTS - UART_CTS	19	Request to Send	Input to LE910Cx-mPCIe controlling the Hardware flow control
8	CTS - UART_RTS	17	Clear to Send	Output from LE910Cx-mPCIe controlling the Hardware flow control

Table 20: LE910Cx-mPCIe Serial Port



Note: To avoid a back-powering effect, it is recommended to prevent any HIGH logic level signal from being applied to the digital pins of the module when it is powered OFF or during an ON/OFF transition.



Note: For minimum implementations, only the TXD and RXD lines need be connected. The other lines can be left open provided a software flow control is implemented.

6.6.2.2. RS232 Level Translation

To interface the LE910Cx-mPCIe with a PC com port or a RS232 (EIA/TIA-232) application, a level translator is required. This level translator must:

- Invert the electrical signal in both directions
- Change the level from 0/1.8V to +15/-15V

The RS232 UART 16450, 16550, 16650 & 16750 chipsets accept signals with lower levels on the RS232 side (EIA/TIA-562), allowing for a lower voltage-multiplying ratio on the level translator. Note that the negative signal voltage must be less than 0V and therefore some sort of level translation is always required.

The easiest way to translate the levels and invert the signal is by using a single chip-level translator. There are a multitude of them, differing in the number of drivers and receivers and in the levels (make sure to get a true RS232 level translator, not a RS485 or other standards).

By convention, the driver is the level translator from the 0-1.8V UART to the RS232 level. The receiver is the translator from the RS232 level to 0-1.8V UART.

To translate the whole set of control lines of the UART, the following is required:

- 1 driver
- 1 receiver



Note: The digital input lines operating at 1.8V CMOS therefore, the level translator IC must not be powered by the +3.8V supply of the module. Instead, it must be powered from a dedicated +1.8V power supply.

RS232 Level Adaption Circuitry Example:

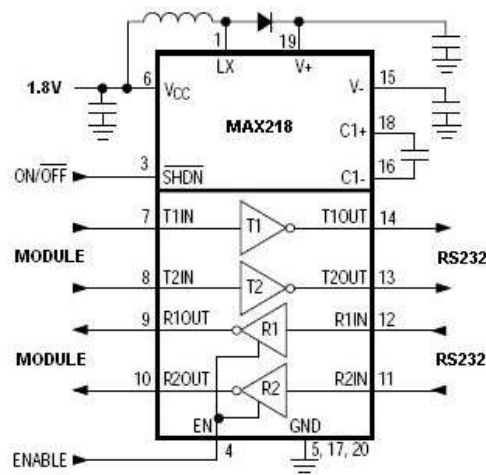


Figure 12: RS232 Level Adaption Circuitry Example



Note: In this case, the length of the lines on the application must be taken into account to avoid problems in the case of High-speed rates on RS232

The RS232 serial port lines are usually connected to a DB9 connector as shown in a Figure below. Signal names and directions are named and defined from the DTE point of view. RS232 Serial Port Lines Connection Layout:

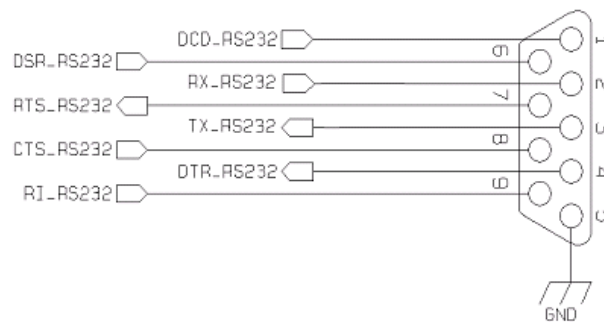


Figure 13: RS232 Serial Port Lines

6.6.3. I2C – Inter-integrated Circuit

The LE910Cx-mPCIe supports an I2C interface on the following pins:

- Pin 30 - I2C_SCL
- Pin 32 - I2C_SDA

The I2C can also be used externally by the end customer application.

LE910Cx-mPCIe supports I2C Master Mode only.



Note: Both I2C lines pulled up internally 2.2kΩ to 1.8V.

6.6.4. Digital Audio

The LE910Cx-mPCIe module can be connected to an external codec through the digital interface.

The product provides a single Digital Audio Interface (DAI) on the following pins:

Digital Audio Interface (DAI) Signals:

Pin	Signal	I/O	Function	Type	Comment
51	PCM_SYNC	I/O	Digital Audio Interface (WAO)	B-PD 1.8V	PCM_SYNC
49	PCM_RX	I	Digital Audio Interface (RX)	B-PD 1.8V	PCM_DIN
47	PCM_TX	O	Digital Audio Interface (TX)	B-PD 1.8V	PCM_DOUT

Pin	Signal	I/O	Function	Type	Comment
45	PCM_CLK	I/O	Digital Audio Interface (CLK)	B-PD 1.8V	PCM_CLK
16	REF_CLK	O	Audio Master Clock	B-PD 1.8V	I2S_MCLK

Table 21: Digital Audio Interface (DVI) Signals

LE910Cx-mPCIe DVI has the following characteristics:

- PCM Master mode or Slave mode using short or long frame sync modes
- 16 bit linear PCM format
- PCM clock rates of 256 kHz, 512 kHz, 1024 kHz and 2048 kHz (Default)
- Frame size of 8, 16, 32, 64, 128 & 256 bits per frame
- Sample rates of 8 kHz and 16 kHz

In addition to the DVI port, the LE910Cx-mPCIe module provides a master clock signal (REF_CLK on Pin 16) which can either provide a reference clock to an external codec or form an I2S interface together with the DVI port where the REF_CLK acts as the I2S_MCLK.

The REF_CLK default frequency is 12.288 MHz.

When using the DVI with REF_CLK as an I2S interface, 12.288 MHz is $256 \times f_s$ (where $f_s = 48$ kHz).

For timing diagrams refer to LE910Cx module Hardware Design Guide at Section 1.5 Related Documents

6.7. SIM Interface

The SIM pins provide the connections necessary to interface to a SIM socket located on the host device. The Voltage levels over this interface comply with 3GPP standards. SIMIN line terminated to GND internally for standard LE910Cx-mPCIe variant without either SIM holder or onboard eSIM.

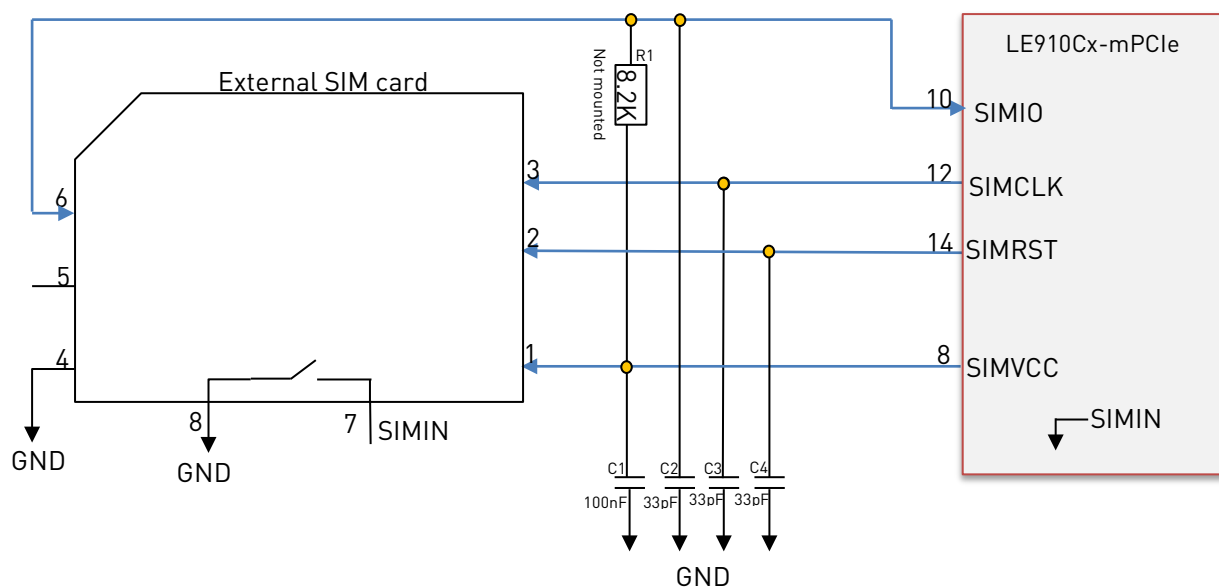


Figure 14: SIM Interface

Pin	Signal	I/O	Function	Type
8	SIMVCC	O	External SIM signal – Power supply for the SIM	1.8 / 3V
10	SIMIO	I/O	External SIM signal - Data I/O	1.8 / 3V
12	SIMCLK	O	External SIM signal – Clock	1.8 / 3V
14	SIMRST	O	External SIM signal – Reset	1.8 / 3V

Table 22: External SIM Signals

Note: The resistor value on SIMIO pulled up to SIMVCC should be defined accordingly in order to be compliant with 3GPP specification.



LE910Cx-mPCIe contains an internal pull-up resistor on SIMIO.

However, the un-mounted option in the application design can be recommended in order to tune R1 if necessary.

7. RF SECTION

7.1. Band Variants

Please refer to the table provided in [Section Product Variants and Frequency Bands](#)

7.2. TX and RX Characteristics

Please refer to the Module's Hardware User guide for the details

7.3. Antenna Requirements

7.3.1. Antenna Connectors

The LE910Cx Mini PCIe adapter is equipped with a set of 50 Ω RF U.FL. connectors from Hirose U.FL-R-SMT-1{10}.

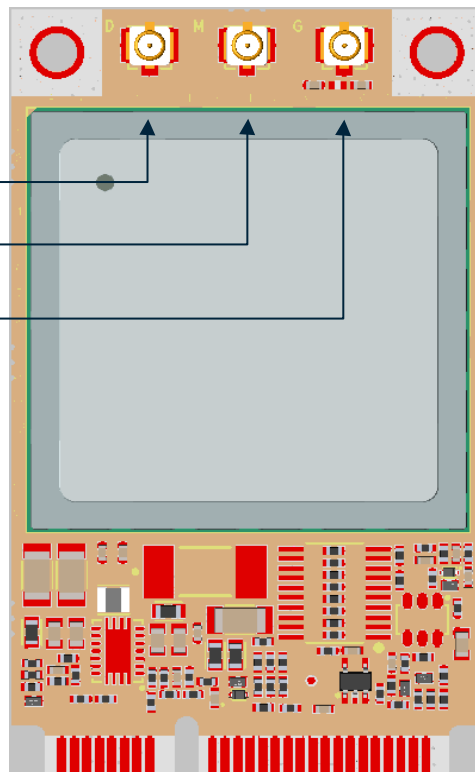
The available connectors are:

- RX Diversity Antenna (DIV)
- Main RF antenna (ANT)
- GNSS Antenna (GPS)

See the picture on the right for their position on the interface.

The presence of all the connectors depends on the product characteristics and the supported functionalities.

For more information about mating connectors, visit the website <https://www.hirose.com/>



The antenna connection is one of the most important aspect in the full product design as it strongly affects the product overall performances, so please read carefully and follow the requirements and the guidelines for a proper design.

The LE910Cx-mPCIe adapter is provided with three RF connectors.

The available connectors are:

- Main RF antenna (ANT)
- RX Diversity Antenna (DIV)
- GNSS Antenna (GPS)

Connecting cables between the module and the antenna must have an impedance of 50 Ω .

If the module impedance does not match, the RF performance is reduced significantly.

If the host device is not designed to use the module diversity or the GPS antenna, terminate the interface with a 50 Ω load.

7.3.2. Main GSM/WCDMA/LTE Antenna Requirements

The antenna for the LE910Cx-mPCIe device must meet the following requirements:

Item	Value
Frequency range	The customer must use the most suitable antenna band width to cover the frequency bands provided by the network operator while using the Telit module. The bands supported by each variant of the xE910Cx module family are provided in Section Product Variants and Frequency Bands
Gain	Gain < 3 dBi
Impedance	50 ohm
Input power	> 33 dBm(2 W) peak power in GSM > 24 dBm average power in WCDMA & LTE
VSWR absolute max	$\leq 10:1$ (limit to avoid permanent damage)
VSWR recommended	$\leq 2:1$ (limit to fulfill all regulatory requirements)

Table 23: Main GSM/WCDMA/LTE Antenna Requirements

7.3.3. Antenna Diversity Requirements

This product includes an input for a second Rx antenna to improve radio sensitivity. The function is called Antenna Diversity.

Item	Value
Frequency range	The customer must use the most suitable antenna band width to cover the frequency bands provided by the network operator while using the Telit module.

Item	Value
	The bands supported by each variant of the xE910Cx module family are provided in Section Product Variants and Frequency Bands
Impedance	50 ohm
VSWR recommended	$\leq 2:1$ (limit to fulfill all regulatory requirements)

Table 24: Antenna Diversity Requirements



Note: If Rx Diversity is not used/connected, perfectly disable the Diversity functionality using the AT+XRxDIV command (refer to 80490ST10778A LE920x4/LE910Cx AT Command User Guide) and connect the Diversity ANT Connector to a 50 Ohm termination or floating.

7.3.4. GNSS Antenna Requirements

LE910Cx modules supports an active antenna. LNA BIAS provided by onboard 3V, 100mA Linear Regulator. Follow LE9x0 AT Command User Guide 80407ST10116A to control GPS_LNA_EN (pin 48).

It is recommended to use antennas as follow:

- An external active antenna (17dB typ. Gain, GPS only)
- An external active antenna plus GNSS pre-filter (17dB typ. Gain)



Note: The external GNSS pre-filter is required for the GLONASS application.

The GNSS pre-filter must meet the following requirements:

Source and load impedance = 50 Ohm

- Insertion loss (1575.42–1576.42 MHz) = 1.4 dB (Max)
- Insertion loss (1565.42–1585.42 MHz) = 2.0 dB (Max)
- Insertion loss (1597.5515–1605.886 MHz) = 2.0 dB (Max)



Note: It is recommended to add a DC block to the customer's GPS application to prevent damage to the LE910Cx-mPCIe module due to unwanted DC voltage.



Note: If GNSS is not used/connected, perfectly disable the GNSS functionality using the AT\$GPSP command (refer to 80490ST10778A LE920x4/LE910Cx AT Command User Guide) and connect the GNSS ANT Connector to a 50 Ohm termination or floating.

7.3.4.1. Combined GNSS Antenna

The use of a combined RF/GNSS antenna is NOT recommended. This solution can generate an extremely poor GNSS reception. Furthermore, the combination of antennas requires an additional diplexer, which adds a significant power loss in the RF path.

7.3.4.2. Linear and Patch GNSS Antenna

Using this type of antenna introduces at least 3 dB of loss compared to a circularly polarized (CP) antenna. Having a spherical gain response instead of a hemispherical gain response can aggravate the multipath behavior and create poor position accuracy.



Note: Please refer to the Module's Hardware User Guide for detailed information about GPS operating modes and RF signal requirements.

8. MECHANICAL DESIGN

8.1. Mechanical Dimensions

The LE910Cx-mPCIe overall dimensions are:

- Length: 50.95 mm
- Width: 30 mm
- Thickness 3.2 mm (Version with SIM holder : 4.62 mm)
- Weight
 - With SIM holder: 10.3 grams
 - Without SIM holder: 9.1 grams

8.1.1. Mechanical Drawing (with SIM Holder)

8.1.1.1. Top View

The figure below shows mechanical top view of the LE910Cx-mPCIe (with SIM holder)

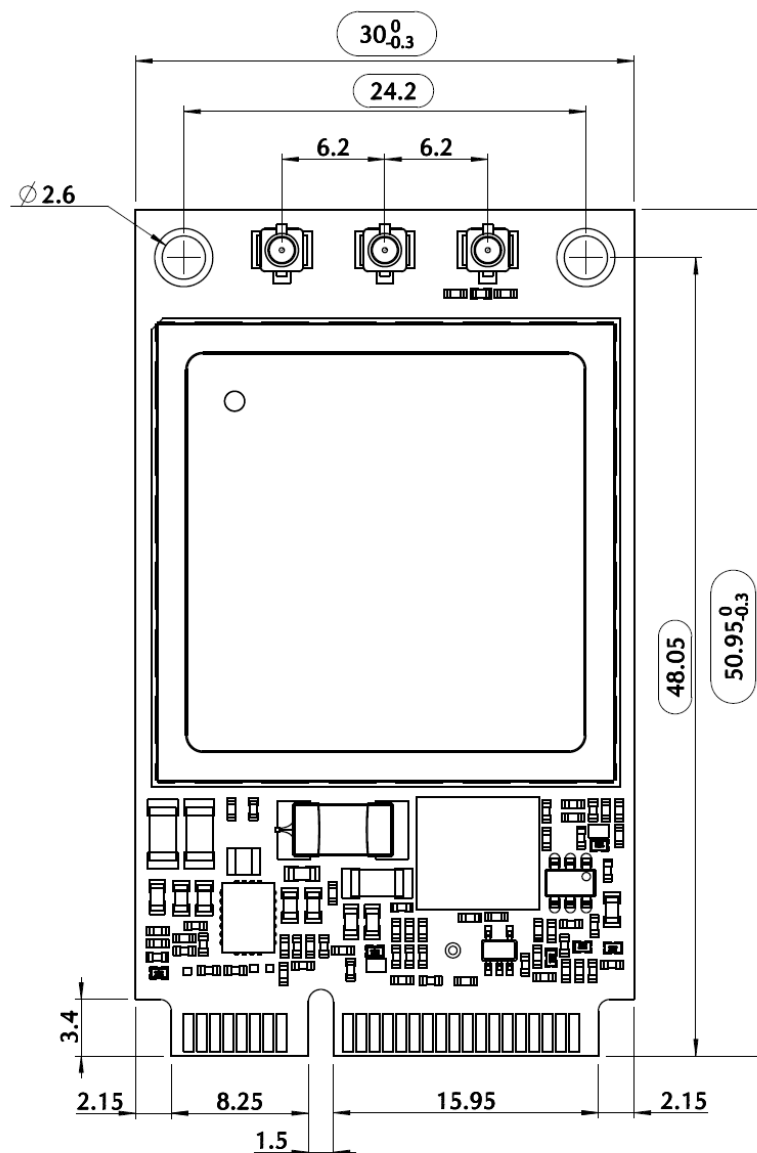


Figure 15: LE910Cx-mPCIe (with SIM Holder) Mechanical Top View

8.1.1.2. Bottom View

The figure below shows mechanical bottom view of the LE910Cx-mPCIe as seen from the bottom side. The figure shows the SIM holder it is not mounted by default. (with SIM holder)

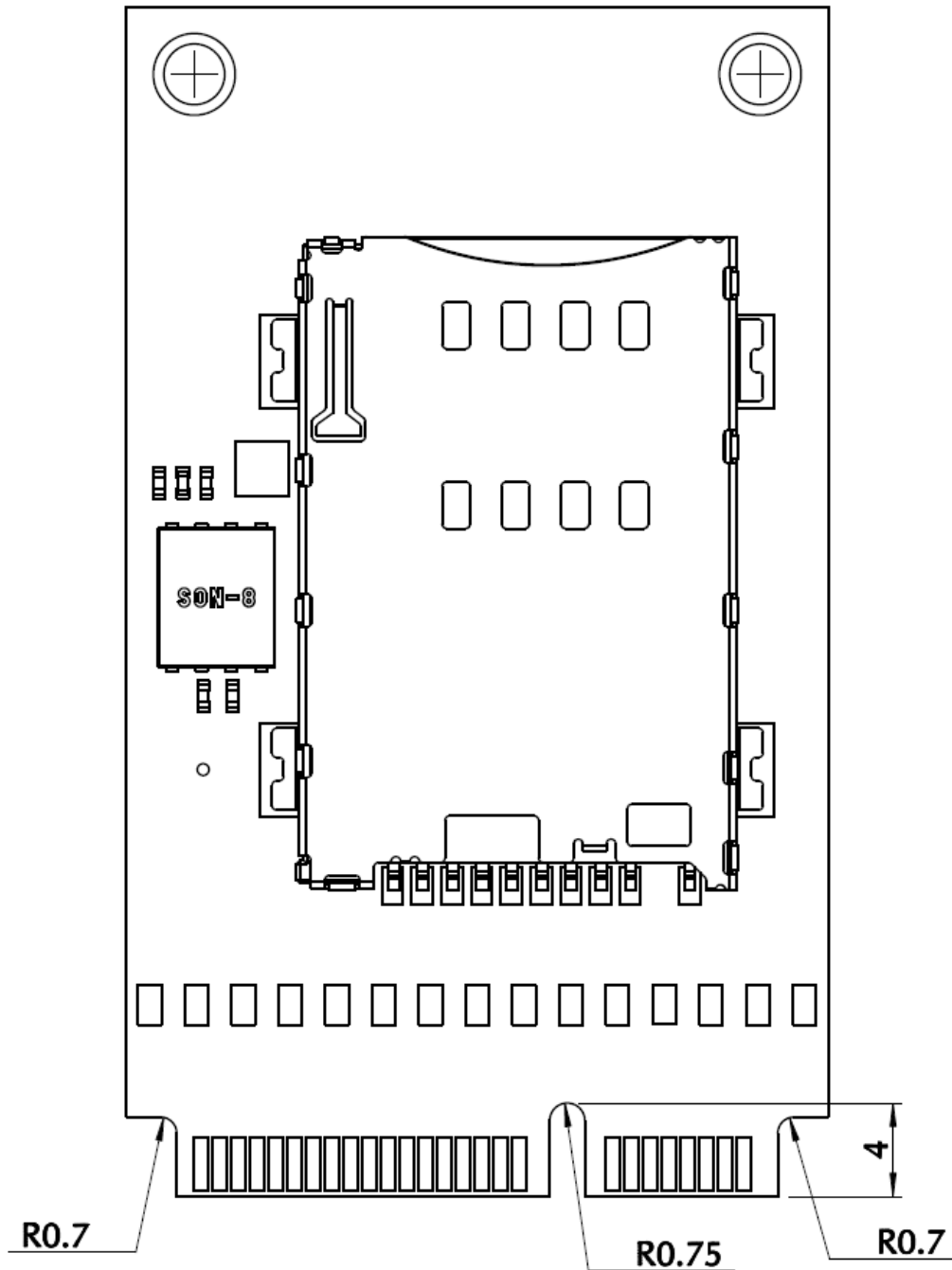


Figure 16: LE910Cx-mPCIe (with SIM Holder) Mechanical Bottom View

8.1.1.3. Side View

The figure below shows mechanical side view of the LE910Cx-mPCIe.

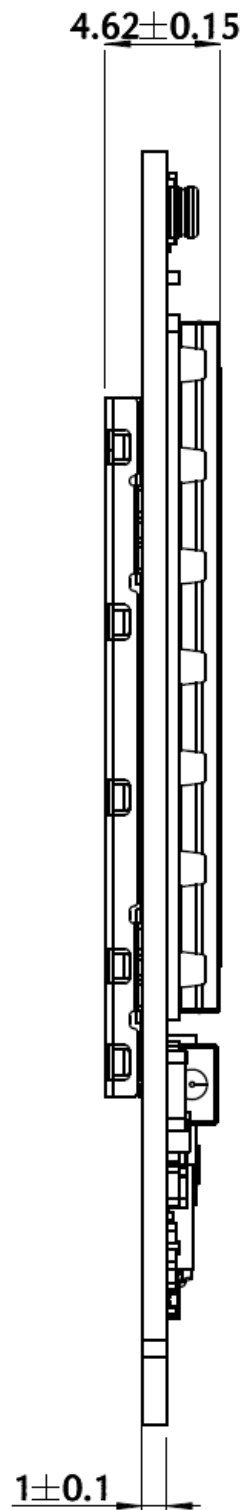


Figure 17: LE910Cx-mPCIe Mechanical Side View

8.1.2. Mechanical Drawing (without SIM Holder)

8.1.2.1. Top View

The figure below shows mechanical top view of the LE910Cx-mPCIe

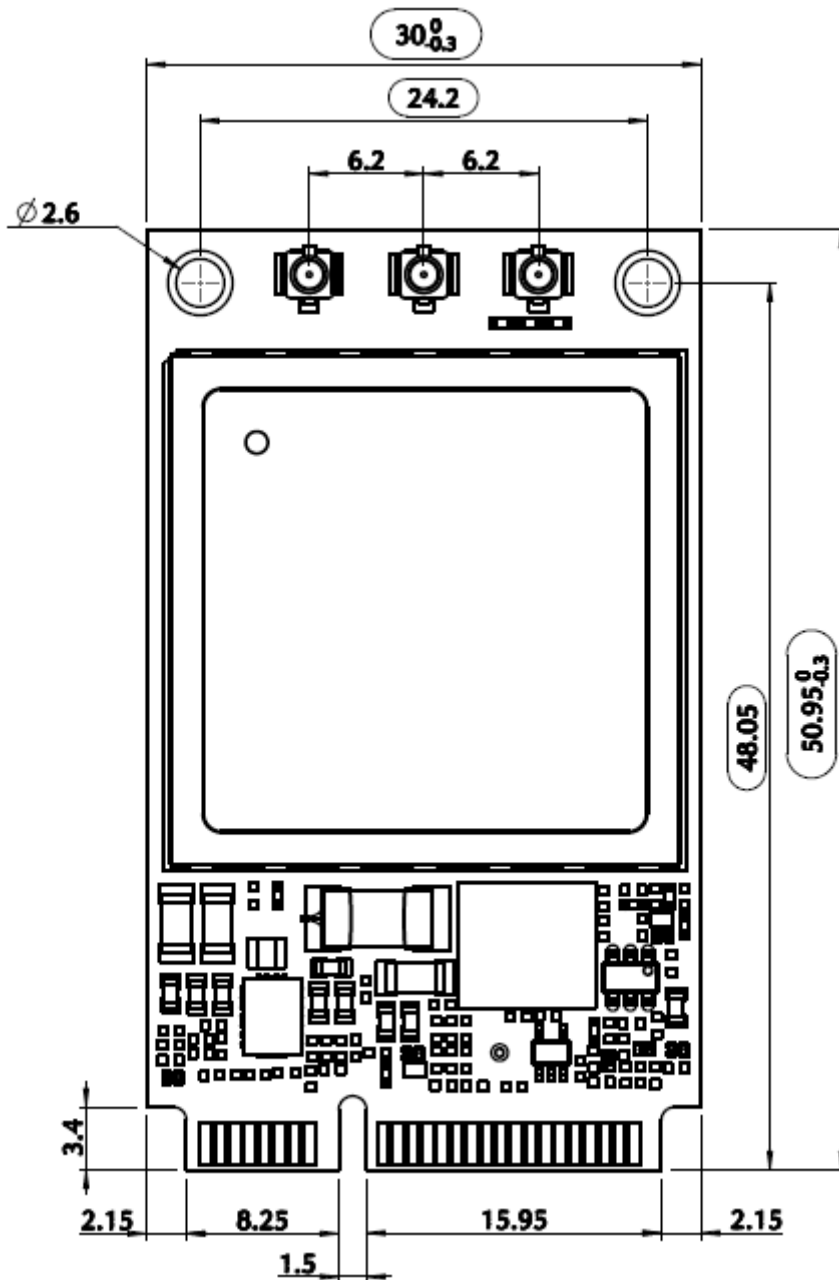


Figure 18: LE910Cx-mPCIe Mechanical Top View

8.1.2.2. Bottom View

The figure below shows mechanical bottom view of the LE910Cx-mPCIe as seen from bottom side.

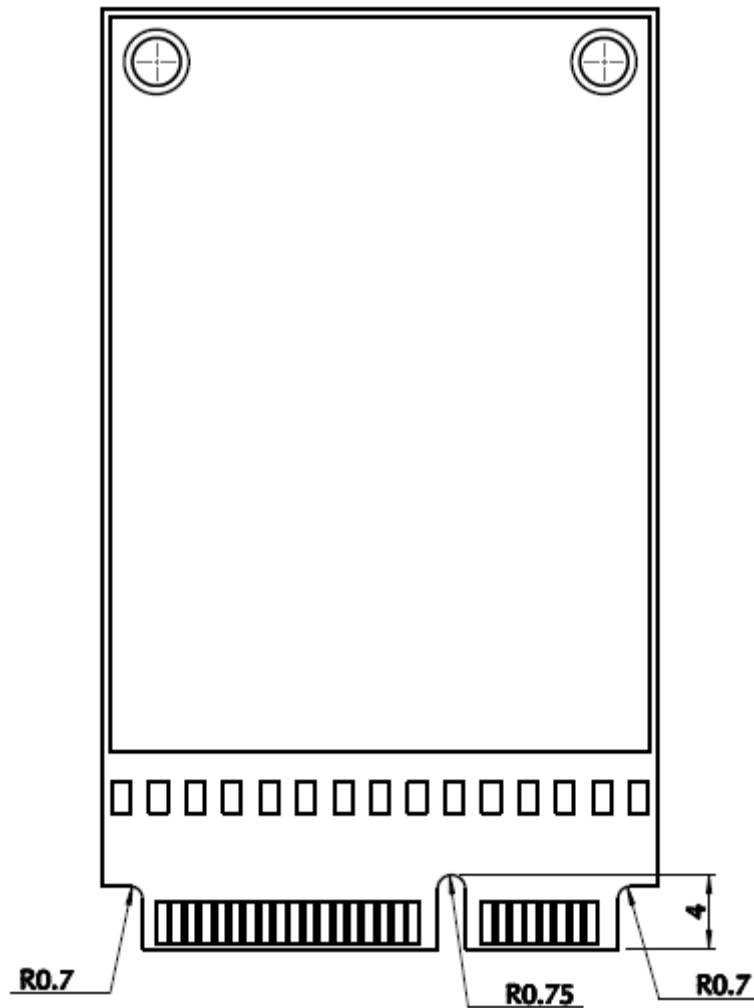
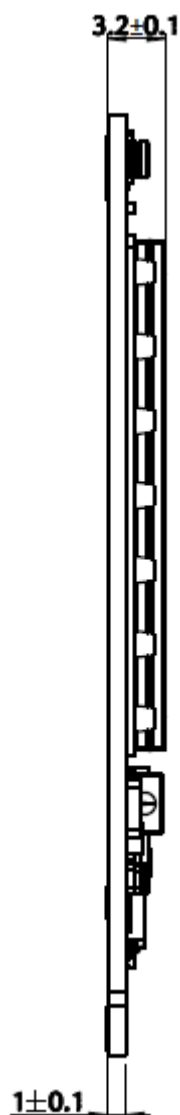


Figure 19: LE910Cx-mPCIe Mechanical Bottom View from Bottom Side.

8.1.2.3. Side View

*Figure 20: Side View*

9. APPLICATION PCB DESIGN

The LE910Cx-mPCIe modules have been designed to comply with a standard lead-free SMT process.

9.1. Recommended Footprint for the Application

LE910Cx-mPCIe modules fits any full mPCIe 52 pin socket and latch connectors compliant with PCI Express Mini Card Electromechanical Specification Revision 2.1

Given below example of board connector (MM60-52B1-E1-R650, JAE) and latch (MM60-EZH059-B5-R650, JAE) footprint for reference only:

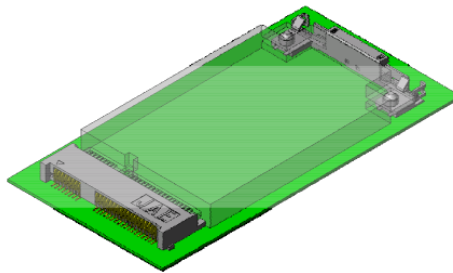


Figure 21: Board Connector

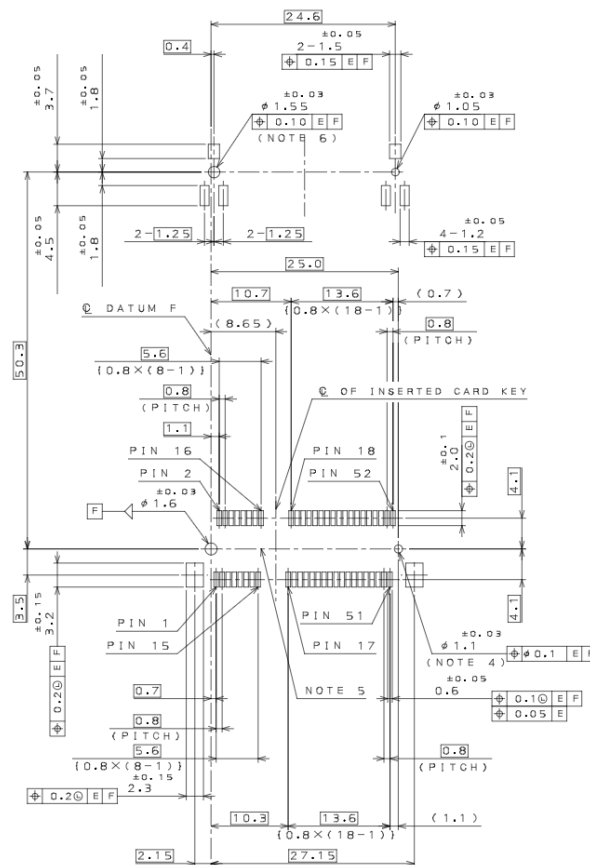


Figure 22: Latch Footprint

10. EMC RECOMMENDATIONS

All LE910Cx-mPCIe signals are equipped with some EMC protection. However, the accepted level differs according to the specific pin.

EMC Recommendations:

Pad	Signal	I/O	Function	Contact	Air
All pins					
	All pins		All functions	± 4 KV	± 8 KV
Antennas					
	Antenna connectors	Analog I/O	Antenna connectors	± 4 KV	± 4 KV

Table 25: EMC Recommendations

Appropriate series resistors must be considered to protect the input lines from overvoltage.

11. PACKAGING

11.1. Tray

The LE910Cx-mPCIe modules are packaged on trays of 20 pieces each:

Modules per Tray	Trays per Envelope	Modules per Envelope	Envelopes per Carton Box	Modules per Box
20	5+1 empty	100	5	500

Table 26: LE910Cx-mPCIe Modules Tray

11.2. Tray Packing

Oder Type	Quantity
Minimum Order Quantity (MOQ)	20
Standard Packing Quantity (SPQ)	500

Table 27: LE910Cx-mPCIe Modules Tray Packing

11.3. Packing Quantities

Tray organization is shown in the figure below:

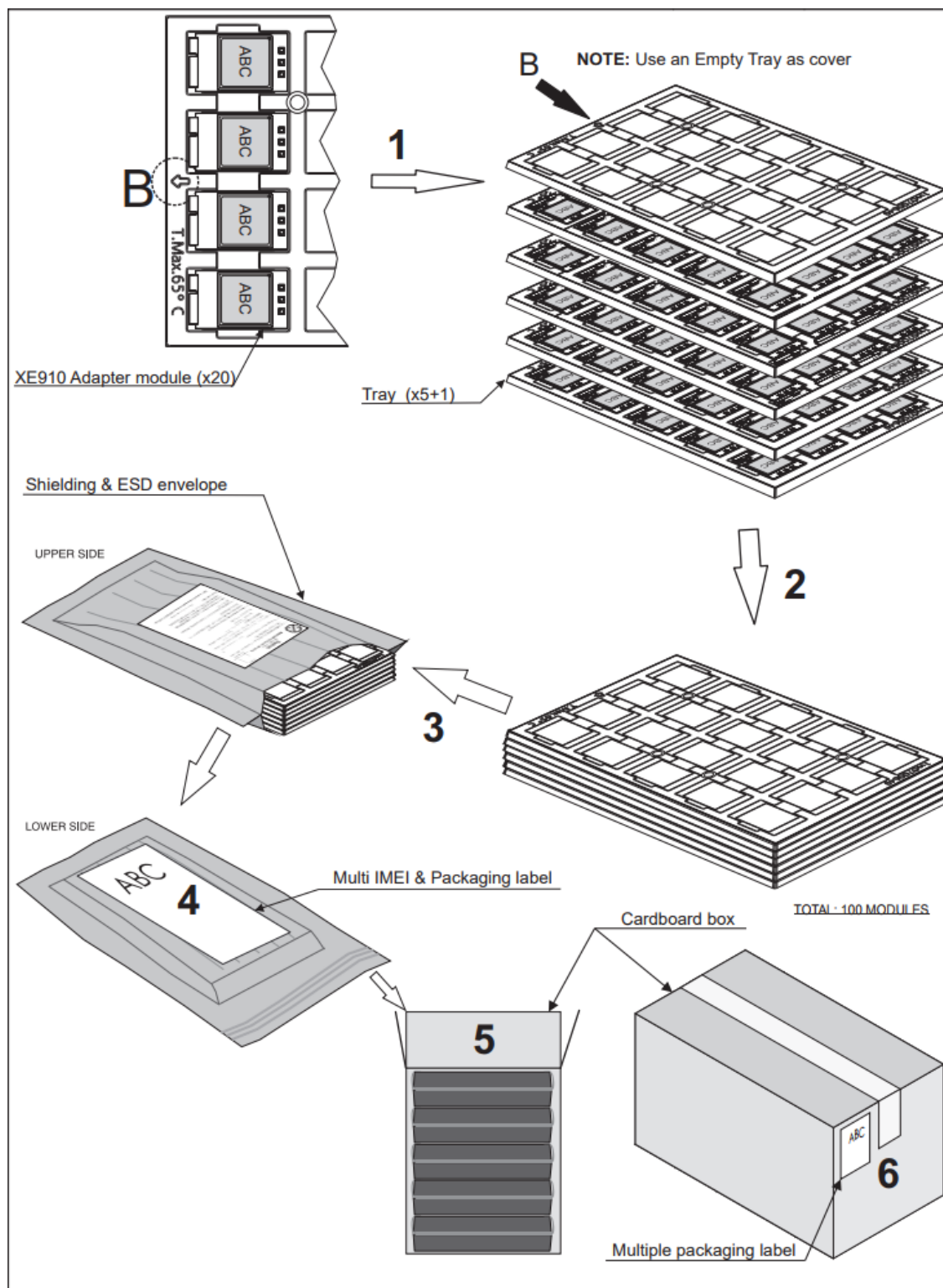


Figure 23: LE910Cx-mPCIe Tray Organization

11.4. Tray Drawing

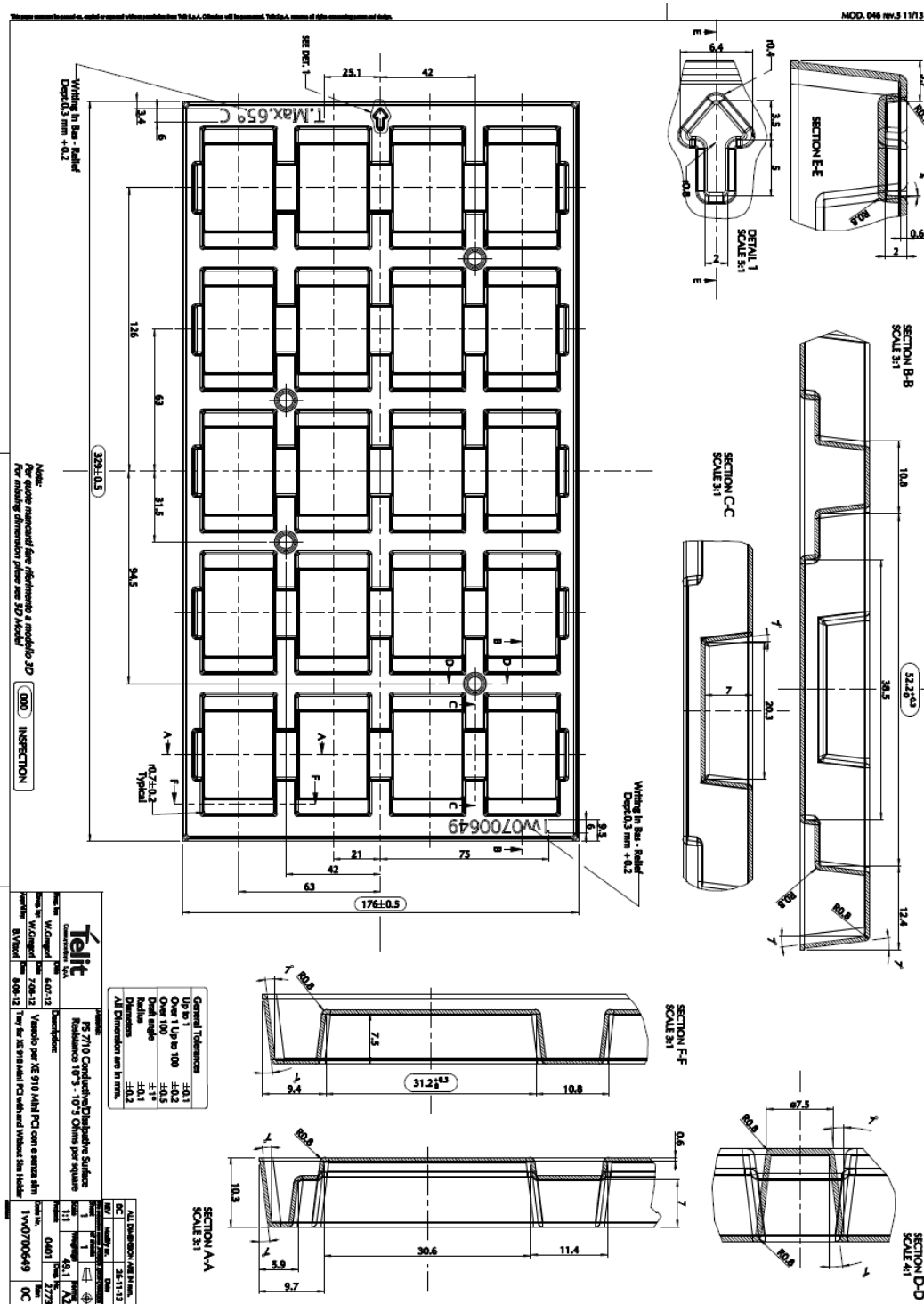


Figure 24: LE910Cx-mPCIe Tray Drawing



Warning: These trays can withstand a maximum temperature of 65°C.

11.5. Moisture Sensitivity

The LE910Cx-mPCIe is a Moisture Sensitive Device level 3, in accordance with standard IPC/JEDEC J-STD-020; it takes care of all related requirements for the use of this type of components.

Moreover, the customer must take care of the following conditions:

- a) Calculated shelf life in sealed bag: 12 months at <40°C and <90% relative humidity (RH).
- b) Environmental condition during the production: 30°C / 60% RH according to IPC/JEDEC J-STD-033A paragraph 5.
- c) The maximum time between the opening of the sealed bag and the reflow process must be 168 hours if condition b) "IPC/JEDEC J-STD-033A paragraph 5.2" is respected
- d) Baking is required if conditions b) or c) are not respected
- e) Baking is required if the humidity indicator inside the bag indicates 10% RH or more

12. CONFORMITY ASSESSMENT ISSUES

12.1. RED Declaration of Conformity

Hereby, Telit Communications S.p.A declares that the LE910Cx_mPCIe Modules are in compliance with Directive 2014/53/EU.

The full text of the EU declaration of conformity is available at the following internet address: <https://www.telit.com/red>

Text of 2014/53/EU Directive (RED) requirements can be found here:

<https://eur-lex.europa.eu/legal-content/EN/TXT/?uri=CELEX:32014L0053>

12.2. UKCA Declaration of Conformity

Hereby, Telit Communications S.p.A declares that the LE910Cx_mPCIe Modules are in compliance with the d Radio Equipment Regulations 2017 for UKCA.

The full text of the UKCA declaration of conformity is available at the following internet address: <https://www.telit.com/ukca>

The UKCA requirements can be found here:

<https://www.gov.uk/guidance/using-the-ukca-marking>

12.3. RED/UKCA Antennas

This radio transmitter has been approved under RED / UKCA to operate with the antenna types listed below with the maximum permissible gain indicated. The usage of a different antenna in the final hosting device may need a new assessment of host conformity to RED / UKCA.

13. REFERENCE TABLE OF RF BANDS CHARACTERISTICS

Mode	Freq. Tx (MHz)	Freq. Rx (MHz)	Channels	Tx-Rx Offset
PCS 1900	1850.2 ~ 1909.8	1930.2 ~ 1989.8	512 ~ 810	80 MHz
DCS 1800	1710 ~ 1785	1805 ~ 1880	512 ~ 885	95 MHz
GSM 850	824.2 ~ 848.8	869.2 ~ 893.8	128 ~ 251	45 MHz
EGSM 900	890 ~ 915	935 ~ 960	0 ~ 124	45 MHz
	880 ~ 890	925 ~ 935	975 ~ 1023	45 MHz
WCDMA 2100 – B1	1920 ~ 1980	2110 ~ 2170	Tx: 9612 ~ 9888 Rx: 10562 ~ 10838	190 MHz
WCDMA 1900 – B2	1850 ~ 1910	1930 ~ 1990	Tx: 9262 ~ 9538 Rx: 9662 ~ 9938	80 MHz
WCDMA 1800 – B3	1710 ~ 1785	1805 ~ 1880	Tx: 937 ~ 1288 Rx: 1162 ~ 1513	95 MHz
WCDMA AWS – B4	1710 ~ 1755	2110 ~ 2155	Tx: 1312 ~ 1513 Rx: 1537 ~ 1738	400 MHz
WCDMA 850 – B5	824 ~ 849	869 ~ 894	Tx: 4132 ~ 4233 Rx: 4357 ~ 4458	45 MHz
WCDMA 900 – B8	880 ~ 915	925 ~ 960	Tx: 2712 ~ 2863 Rx: 2937 ~ 3088	45 MHz
WCDMA 1800 – B9	1750 ~ 1784.8	1845 ~ 1879.8	Tx: 8762 ~ 8912 Rx: 9237 ~ 9387	95 MHz
WCDMA 800 – B19	830 ~ 845	875 ~ 890	Tx: 312 ~ 363 Rx: 712 ~ 763	45 MHz
TDSCDMA 2000 – B34	2010 ~ 2025	2010 ~ 2025	Tx: 10054 ~ 10121 Rx: 10054 ~ 10121	0 MHz
TDSCDMA 1900 – B39	1880 ~ 1920	1880 ~ 1920	Tx: 9404 ~ 9596 Rx: 9404 ~ 9596	0 MHz
LTE 2100 – B1	1920 ~ 1980	2110 ~ 2170	Tx: 18000 ~ 18599 Rx: 0 ~ 599	190 MHz
LTE 1900 – B2	1850 ~ 1910	1930 ~ 1990	Tx: 18600 ~ 19199 Rx: 600 ~ 1199	80 MHz
LTE 1800 – B3	1710 ~ 1785	1805 ~ 1880	Tx: 19200 ~ 19949 Rx: 1200 ~ 1949	95 MHz
LTE AWS – B4	1710 ~ 1755	2110 ~ 2155	Tx: 19950 ~ 20399 Rx: 1950 ~ 2399	400 MHz
LTE 850 – B5	824 ~ 849	869 ~ 894	Tx: 20400 ~ 20649 Rx: 2400 ~ 2649	45 MHz
LTE 2600 – B7	2500 ~ 2570	2620 ~ 2690	Tx: 20750 ~ 21449 Rx: 2750 ~ 3449	120 MHz

Mode	Freq. Tx (MHz)	Freq. Rx (MHz)	Channels	Tx-Rx Offset
LTE 900 – B8	880 ~ 915	925 ~ 960	Tx: 21450 ~ 21799 Rx: 3450 ~ 3799	45 MHz
LTE 1800 – B9	1749.9 ~ 1784.9	1844.9 ~ 1879.9	Tx: 21800 ~ 2149 Rx: 3800 ~ 4149	95 MHz
LTE AWS+ – B10	1710 ~ 1770	2110 ~ 2170	Tx: 22150 ~ 22749 Rx: 4150 ~ 4749	400 MHz
LTE 700a – B12	699 ~ 716	729 ~ 746	Tx : 23010 ~ 23179 Rx : 5010 ~ 5179	30 MHz
LTE 700c – B13	777 ~ 787	746 ~ 756	Tx : 27210 ~ 27659 Rx : 9210 ~ 9659	-31 MHz
LTE 700PS – B14	788 ~ 798	758 ~ 768	Tx: 23280 ~ 23379 Rx: 5280 ~ 5379	-30 MHz
LTE 700b – B17	704 ~ 716	734 ~ 746	Tx: 23730 ~ 23849 Rx: 5730 ~ 5849	30 MHz
LTE 800 – B19	830 ~ 845	875 ~ 890	Tx: 24000 ~ 24149 Rx: 6000 ~ 6149	45 MHz
LTE 800 – B20	832 ~ 862	791 ~ 821	Tx: 24150 ~ 24449 Rx: 6150 ~ 6449	-41 MHz
LTE 1500 – B21	1447.9 ~ 1462.9	1495.9 ~ 1510.9	Tx: 24450 ~ 24599 Rx: 6450 ~ 6599	48 MHz
LTE 1900+ – B25	1930 ~ 1995	1850 ~ 1915	Tx: 26040 ~ 26689 Rx: 8040 ~ 8689	80 MHz
LTE 850+ – B26	814 ~ 849	859 ~ 894	Tx: 26690 ~ 27039 Rx: 8690 ~ 9039	45 MHz
LTE 700 – B28A	703 ~ 733	758 ~ 788	Tx: 27210 ~ 27510 Rx: 9210 ~ 9510	55 MHz
LTE 700 – B28	703 ~ 748	758 ~ 803	Tx : 27210 ~ 27659 Rx : 9210 ~ 9659	45 MHz
LTE AWS-3 – B66	1710 ~ 1780	2210 ~ 2200	Tx: 131972-132671 Rx: 66436-67335	400 MHz
LTE600 – B71	663 ~ 698	617 ~ 652	Tx: 133122-133471 Rx: 68568-68935	46 MHz
LTE TDD 2600 – B38	2570 ~ 2620	2570 ~ 2620	Tx: 37750 ~ 38250 Rx: 37750 ~ 38250	0 MHz
LTE TDD 1900 – B39	1880 ~ 1920	1880 ~ 1920	Tx: 38250 ~ 38650 Rx: 38250 ~ 38650	0 MHz
LTE TDD 2300 – B40	2300 ~ 2400	2300 ~ 2400	Tx: 38650 ~ 39650 Rx: 38650 ~ 39650	0 MHz
LTE TDD 2500 – B41M	2555 ~ 2655	2555 ~ 2655	Tx: 40265 ~ 41215 Rx: 40265 ~ 41215	0 MHz

Table 28: RF Bands Characteristics

14. PRODUCT AND SAFETY INFORMATION

14.1. Copyrights and Other Notices

SPECIFICATIONS ARE SUBJECT TO CHANGE WITHOUT NOTICE

Although reasonable efforts have been made to ensure the accuracy of this document, Telit assumes no liability resulting from any inaccuracies or omissions in this document, or from the use of the information contained herein. The information contained in this document has been carefully checked and is believed to be reliable. Telit reserves the right to make changes to any of the products described herein, to revise it and to make changes from time to time without any obligation to notify anyone of such revisions or changes. Telit does not assume any liability arising from the application or use of any product, software, or circuit described herein; neither does it convey license under its patent rights or the rights of others.

This document may contain references or information about Telit's products (machines and programs), or services that are not announced in your country. Such references or information do not necessarily mean that Telit intends to announce such Telit products, programming, or services in your country.

14.1.1. Copyrights

This instruction manual and the Telit products described herein may include or describe Telit copyrighted material, such as computer programs stored in semiconductor memories or other media. The laws in Italy and in other countries reserve to Telit and its licensors certain exclusive rights for copyrighted material, including the exclusive right to copy, reproduce in any form, distribute and make derivative works of the copyrighted material. Accordingly, any of Telit's or its licensors' copyrighted material contained herein or described in this instruction manual, shall not be copied, reproduced, distributed, merged or modified in any way without the express written permission of the owner. Furthermore, the purchase of Telit products shall not be deemed to grant in any way, neither directly nor by implication, or estoppel, any license.

14.1.2. Computer Software Copyrights

Telit and the Third Party supplied Software (SW) products, described in this instruction manual may include Telit's and other Third Party's copyrighted computer programs stored in semiconductor memories or other media. The laws in Italy and in other

countries reserve to Telit and other Third Party SW exclusive rights for copyrighted computer programs, including – but not limited to – the exclusive right to copy or reproduce in any form the copyrighted products. Accordingly, any copyrighted computer programs contained in Telit's products described in this instruction manual shall not be copied (reverse engineered) or reproduced in any manner without the express written permission of the copyright owner, being Telit or the Third Party software supplier. Furthermore, the purchase of Telit products shall not be deemed to grant either directly or by implication, estoppel, or in any other way, any license under the copyrights, patents or patent applications of Telit or other Third Party supplied SW, except for the normal non-exclusive, royalty free license to use arising by operation of law in the sale of a product.

14.2. Usage and Disclosure Restrictions

14.2.1. License Agreements

The software described in this document is owned by Telit and its licensors. It is furnished by express license agreement only and shall be used exclusively in accordance with the terms of such agreement.

14.2.2. Copyrighted Materials

The Software and the documentation are copyrighted materials. Making unauthorized copies is prohibited by the law. The software or the documentation shall not be reproduced, transmitted, transcribed, even partially, nor stored in a retrieval system, nor translated into any language or computer language, in any form or by any means, without prior written permission of Telit.

14.2.3. High Risk Materials

Components, units, or third-party goods used in the making of the product described herein are NOT fault-tolerant and are NOT designed, manufactured, or intended for use as on-line control equipment in the following hazardous environments requiring fail-safe controls: operations of Nuclear Facilities, Aircraft Navigation or Aircraft Communication Systems, Air Traffic Control, Life Support, or Weapons Systems ("High Risk Activities"). Telit and its supplier(s) specifically disclaim any expressed or implied warranty of fitness eligibility for such High Risk Activities.

14.2.4. Trademarks

TELIT and the Stylized T-Logo are registered in the Trademark Office. All other product or service names are property of their respective owners.

14.2.5. 3rd Party Rights

The software may include Third Party's software Rights. In this case the user agrees to comply with all terms and conditions imposed in respect of such separate software rights. In addition to Third Party Terms, the disclaimer of warranty and limitation of liability provisions in this License, shall apply to the Third Party Rights software as well.

TELIT HEREBY DISCLAIMS ANY AND ALL WARRANTIES EXPRESSED OR IMPLIED FROM ANY THIRD PARTY REGARDING ANY SEPARATE FILES, ANY THIRD PARTY MATERIALS INCLUDED IN THE SOFTWARE, ANY THIRD PARTY MATERIALS FROM WHICH THE SOFTWARE IS DERIVED (COLLECTIVELY "OTHER CODES"), AND THE USE OF ANY OR ALL OTHER CODES IN CONNECTION WITH THE SOFTWARE, INCLUDING (WITHOUT LIMITATION) ANY WARRANTIES OF SATISFACTORY QUALITY OR FITNESS FOR A PARTICULAR PURPOSE.

NO THIRD PARTY LICENSORS OF OTHER CODES MUST BE LIABLE FOR ANY DIRECT, INDIRECT, INCIDENTAL, SPECIAL, EXEMPLARY, OR CONSEQUENTIAL DAMAGES (INCLUDING WITHOUT LIMITATION LOST OF PROFITS), HOWEVER CAUSED AND WHETHER MADE UNDER CONTRACT, TORT OR OTHER LEGAL THEORY, ARISING IN ANY WAY OUT OF THE USE OR DISTRIBUTION OF THE OTHER CODES OR THE EXERCISE OF ANY RIGHTS GRANTED UNDER EITHER OR BOTH THIS LICENSE AND THE LEGAL TERMS APPLICABLE TO ANY SEPARATE FILES, EVEN IF ADVISED OF THE POSSIBILITY OF SUCH DAMAGES.

14.2.6. Waiver of Liability

IN NO EVENT WILL TELIT AND ITS AFFILIATES BE LIABLE FOR ANY DIRECT, INDIRECT, SPECIAL, GENERAL, INCIDENTAL, CONSEQUENTIAL, PUNITIVE OR EXEMPLARY INDIRECT DAMAGE OF ANY KIND WHATSOEVER, INCLUDING BUT NOT LIMITED TO REIMBURSEMENT OF COSTS, COMPENSATION OF ANY DAMAGE, LOSS OF PRODUCTION, LOSS OF PROFIT, LOSS OF USE, LOSS OF BUSINESS, LOSS OF DATA OR REVENUE, WHETHER OR NOT THE POSSIBILITY OF SUCH DAMAGES COULD HAVE BEEN REASONABLY FORESEEN, CONNECTED IN ANY WAY TO THE USE OF THE PRODUCT/S OR TO THE INFORMATION CONTAINED IN THE PRESENT DOCUMENTATION, EVEN IF TELIT

AND/OR ITS AFFILIATES HAVE BEEN ADVISED OF THE POSSIBILITY OF SUCH DAMAGES OR THEY ARE FORESEEABLE OR FOR CLAIMS BY ANY THIRD PARTY.

14.3. Safety Recommendations

Make sure the use of this product is allowed in your country and in the environment required. The use of this product may be dangerous and has to be avoided in areas where:

- it can interfere with other electronic devices, particularly in environments such as hospitals, airports, aircrafts, etc.
- there is a risk of explosion such as gasoline stations, oil refineries, etc. It is the responsibility of the user to enforce the country regulation and the specific environment regulation.

Do not disassemble the product; any mark of tampering will compromise the warranty validity. We recommend following the instructions of the hardware user guides for correct wiring of the product. The product has to be supplied with a stabilized voltage source and the wiring has to be conformed to the security and fire prevention regulations. The product has to be handled with care, avoiding any contact with the pins because electrostatic discharges may damage the product itself. Same cautions have to be taken for the SIM, checking carefully the instruction for its use. Do not insert or remove the SIM when the product is in power saving mode.

The system integrator is responsible for the functioning of the final product. Therefore, the external components of the module, as well as any project or installation issue, have to be handled with care. Any interference may cause the risk of disturbing the GSM network or external devices or having an impact on the security system. Should there be any doubt, please refer to the technical documentation and the regulations in force. Every module has to be equipped with a proper antenna with specific characteristics. The antenna has to be installed carefully in order to avoid any interference with other electronic devices and has to guarantee a minimum distance from the body (20 cm). In case this requirement cannot be satisfied, the system integrator has to assess the final product against the SAR regulation. The equipment is intended to be installed in a restricted area location.

The equipment must be supplied by an external specific limited power source in compliance with the standard EN 62368-1:2014. The European Community provides some Directives for the electronic equipment introduced on the market. All of the relevant information is available on the European Community website:

https://ec.europa.eu/growth/sectors/electrical-engineering_en

15. GLOSSARY

ADC	Analog – Digital Converter
CLK	Clock
CMOS	Complementary Metal – Oxide Semiconductor
CS	Chip Select
DAC	Digital – Analog Converter
DTE	Data Terminal Equipment
ESR	Equivalent Series Resistance
GPIO	General Purpose Input Output
HS	High Speed
HSDPA	High Speed Downlink Packet Access
HSIC	High Speed Inter Chip
HSUPA	High Speed Uplink Packet Access
I/O	Input Output
MISO	Master Input – Slave Output
MOSI	Master Output – Slave Input
MRDY	Master Ready
PCB	Printed Circuit Board
RED	Radio Equipment Directive
RTC	Real Time Clock
SIM	Subscriber Identification Module
SPI	Serial Peripheral Interface
SRDY	Slave Ready
TTSC	Telit Technical Support Centre
UART	Universal Asynchronous Receiver Transmitter
UMTS	Universal Mobile Telecommunication System
USB	Universal Serial Bus
VNA	Vector Network Analyzer
VSWR	Voltage Standing Wave Ratio
WCDMA	Wideband Code Division Multiple Access


16. DOCUMENT HISTORY

Revision	Date	Changes
15	2021-11-03	TABLE 3 UPDATE INTERFACE [REMOVE SPI]
14	2021-10-07	Applicability Table and Section 2.2 - Update product variants (WWX/WWXD) 12. Conformity Assessment Issues section updated
13	2021-07-07	Applicability Table and Section 2.2 - Update product variants(SVX and SAX) Minor changes on the language and layout Legal Notices updated
12	2021-01-27	Modified table errors and typos Section 3.2 – Added pin-out section; full compatibility with mPCIe spec. Modified figure sections 4.3.1.1. and 4.3.1.2 Section 8.1 – Updated Mechanical Drawing
11	2020-10-12	Section 2.7.2 – Updated Weight
10	2020-07-06	APPLICABILITY TABLE - -EUX added Section 2.5 – TX Output Power – Updated Section 2.6 – RX Sensitivity- Updated and Note added 7.3.3 Antenna Diversity Requirements – Note Added 7.3.4 GNSS Antenna Requirements – Note added
9	2020-07-01	Section 3.1 – Updated Pin-out
8	2019-08-13	Section 3.1 – added 'WARNING' two types of mPCIe modules; V1 and V2
7	2019-06-17	Section 2.2 – Updated product Variants Section 2.7.1 – Updated Dimensions Section 11.3 – Updated moisture sensitivity from level 3 to level 1
6	2018-12-04	Add Variants – LE910C1-NF, LE910C4-EU, LE910C1-SA, LE910C1-ST, LE910C1-SV, LE910C1-LA
5	2018-11-21	Section 4.3.1.3 – Deleted Battery Source Power Supply Design Guide
4	2018-06-20	Section 1.5 – Updated reference documents Section 2.2 – Updated product Variants and Frequency Bands Section 4.1 & 5.2 – Updated operating voltage settings
3	2018-06-11	Section 2.2 – Updated product Variants and Frequency Bands Section 3.1 – Updated pinout table Section 4.3.2 – Updated thermal design guidelines




Revision	Date	Changes
		Section 14 - Updated frequency table
2	2018-02-28	Updated weight and added note related to Power Down / Off
1	2018-01-11	First issue

From Mod.0818 rev.4



Connect to our site and contact our
technical support team for any question

www.telit.com



Telit reserves all rights to this document and the information contained herein. Products, names, logos and designs described herein may in whole or in part be subject to intellectual property rights. The information contained herein is provided "as is". No warranty of any kind, either express or implied, is made in relation to the accuracy, reliability, fitness for a particular purpose or content of this document. This document may be revised by Telit at any time. For most recent documents, please visit www.telit.com

Copyright © 2021, Telit